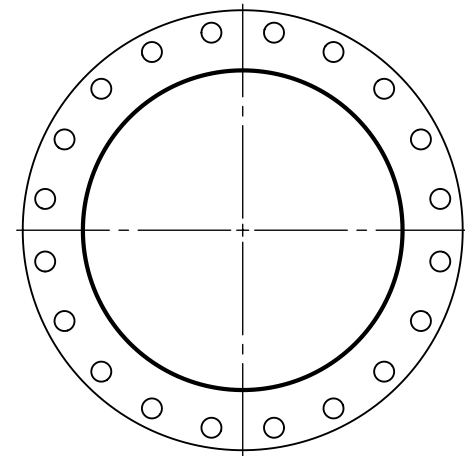
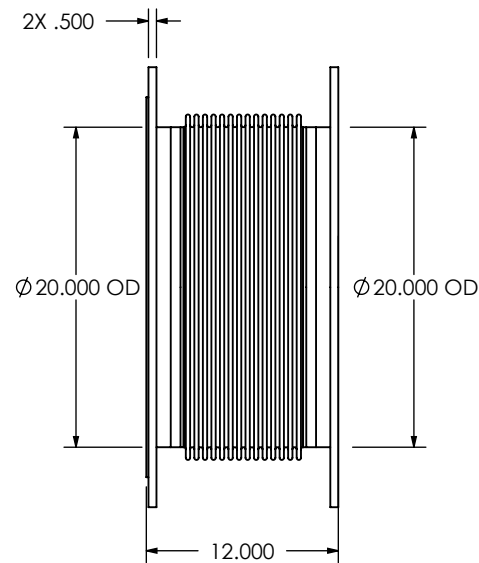
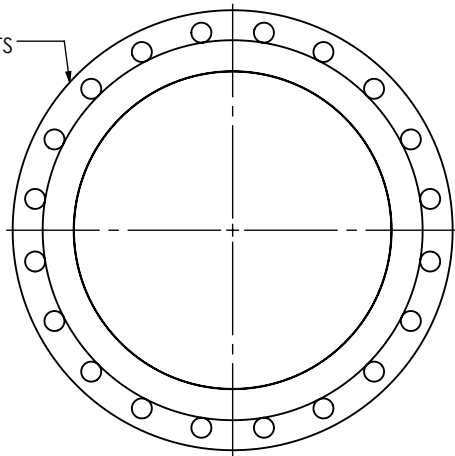


(2) 20" FF FLANGE
150 lb ANSI
STANDARD
BOLT PATTERN
FLANGE FLOATS



NOTES:



- DO NOT USE EQUIPMENT TO SUPPORT OTHER PARTS OF THE EXHAUST SYSTEM WITHOUT PROPER REINFORCEMENT

MATERIAL CONSTRUCTION:

- 304SS/321SS

PAINT:

- NONE

PROJECT NAME University of Guelph		PROPRIETARY AND CONFIDENTIAL THE INFORMATION CONTAINED IN THIS DRAWING IS THE SOLE PROPERTY OF MIRATECH GROUP, LLC. ANY REPRODUCTION IN PART OR AS A WHOLE WITHOUT THE WRITTEN PERMISSION OF MIRATECH GROUP, LLC IS PROHIBITED.	DIMENSIONS ARE IN INCHES UNLESS OTHERWISE SPECIFIED		 		
PROPOSAL NUMBER SH-16-1948			DIMENSIONAL TOLERANCES UNLESS OTHERWISE SPECIFIED ANGLES: MACH: $\pm 1^\circ$ INCHES: ± 0.125 BEND: $\pm 3^\circ$ MILLIMETERS: ± 2		BL220-20PF1-20PF2-120-3 Submittal Drawing		
SALES ORDER NO. 22105			DO NOT SCALE DRAWING				
CUSTOMER P.O. P1125-UG0225			DRAWN CLV	DATE 4/11/2017	DRAWING BL220-20PF1-20PF2-120-3 SD		REV 0
			REVIEWED BY AJM	DATE 4/11/2017	SIZE A	SCALE 1:12	WEIGHT: 82 lb