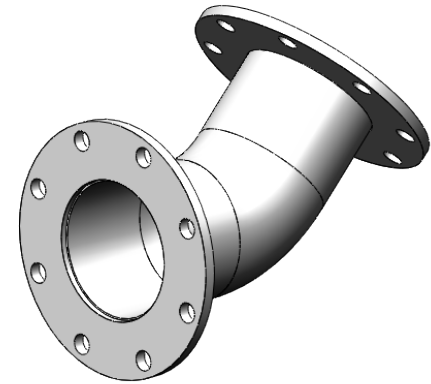
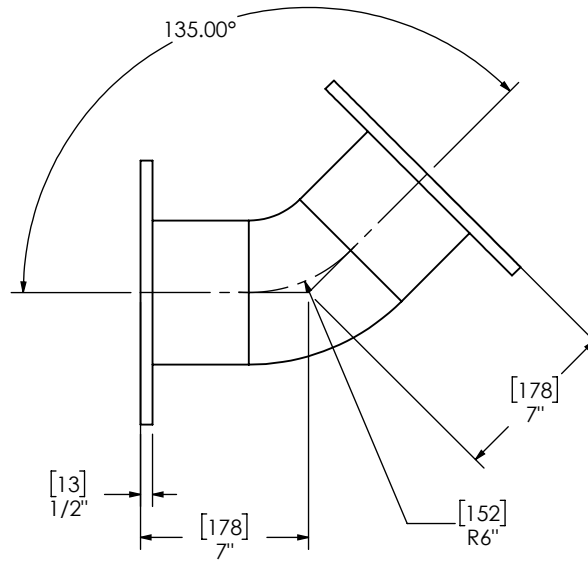


(2) 6" FF FLANGE
150 lb ANSI
STANDARD
BOLT PATTERN



NOTES:

- DO NOT USE EQUIPMENT TO SUPPORT OTHER PARTS OF THE EXHAUST SYSTEM WITHOUT PROPER REINFORCEMENT

MATERIAL CONSTRUCTION:

- ALUMINIZED STEEL

PAINT:



- HIGH TEMPERATURE BLACK (MIRATECH COATING SYSTEM 5)

PROJECT NAME	
PROPOSAL NUMBER	
SALES ORDER NO.	
CUSTOMER P.O.	

PROPRIETARY AND CONFIDENTIAL

THE INFORMATION CONTAINED IN THIS DRAWING IS THE SOLE PROPERTY OF MIRATECH GROUP, LLC. ANY REPRODUCTION IN PART OR AS A WHOLE WITHOUT THE WRITTEN PERMISSION OF MIRATECH GROUP, LLC IS PROHIBITED.

DIMENSIONS ARE APPROXIMATE IN INCHES UNLESS OTHERWISE SPECIFIED	
DIMENSIONAL TOLERANCES UNLESS OTHERWISE SPECIFIED	
ANGLES	
MACH: ±2*	INCHES: ±1/8
BEND: ±3*	MILLIMETERS: ±5
DO NOT SCALE DRAWING	
DRAWN	DATE
TES	3/13/2019
REVIEWED BY	DATE
CAC	3/13/2019

			
EB-06TF1-06TF1-070X0070-1 Sales Drawing			
DRAWING		REV	
EB-06TF1-06TF1-070X0070-1 SD		0	
SIZE	SCALE 1:8	WEIGHT: 22 lb	SHEET 1 OF 1