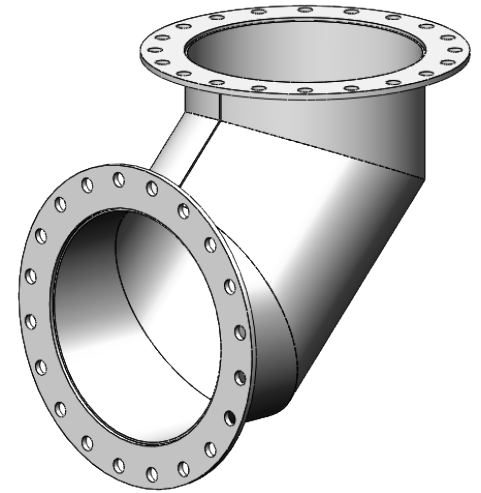
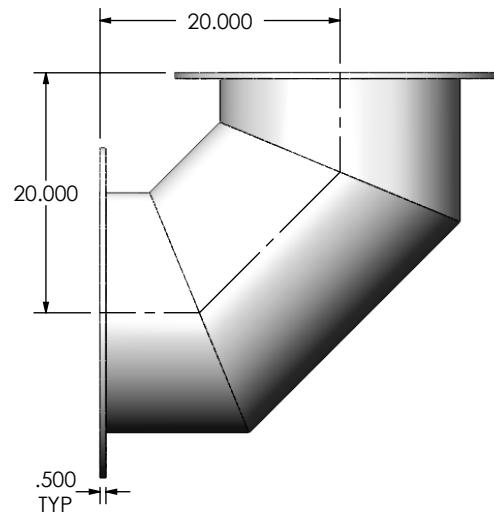


(2) 20" FF FLANGE
150 lb ANSI
STANDARD
BOLT PATTERN



NOTES:



- DO NOT USE EQUIPMENT TO SUPPORT OTHER PARTS OF THE EXHAUST SYSTEM WITHOUT PROPER REINFORCEMENT

MATERIAL CONSTRUCTION:

- CARBON STEEL

PAINT:

- HIGH TEMPERATURE BLACK (MIRATECH COATING SYSTEM 5)

PROJECT NAME	PROPRIETARY AND CONFIDENTIAL THE INFORMATION CONTAINED IN THIS DRAWING IS THE SOLE PROPERTY OF MIRATECH GROUP, LLC. ANY REPRODUCTION IN PART OR AS A WHOLE WITHOUT THE WRITTEN PERMISSION OF MIRATECH GROUP, LLC IS PROHIBITED.	DIMENSIONS ARE IN INCHES UNLESS OTHERWISE SPECIFIED		 			
PROPOSAL NUMBER		DIMENSIONAL TOLERANCES UNLESS OTHERWISE SPECIFIED ANGLES: MACH: $\pm 1^\circ$ INCHES: ± 0.125 BEND: $\pm 3^\circ$ MILLIMETERS: ± 2					
SALES ORDER NO.		DO NOT SCALE DRAWING		EL-20PF1-20PF1-200X0200-2 SD Sales Drawing			
CUSTOMER P.O.		DRAWN CSF	DATE 11/28/2016				
		REVIEWED BY AJM	DATE 11/28/2016	SIZE A	SCALE 1:16	WEIGHT: 173 lb	SHEET 1 OF 1