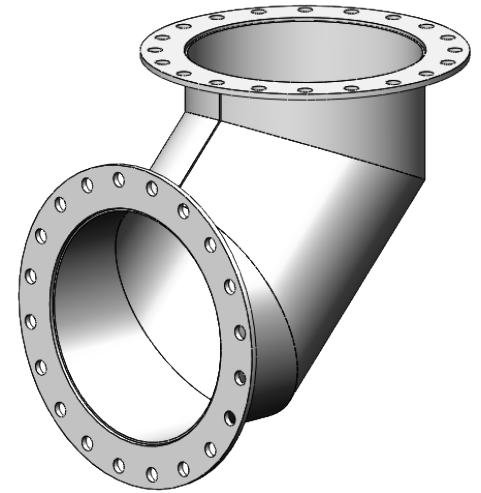
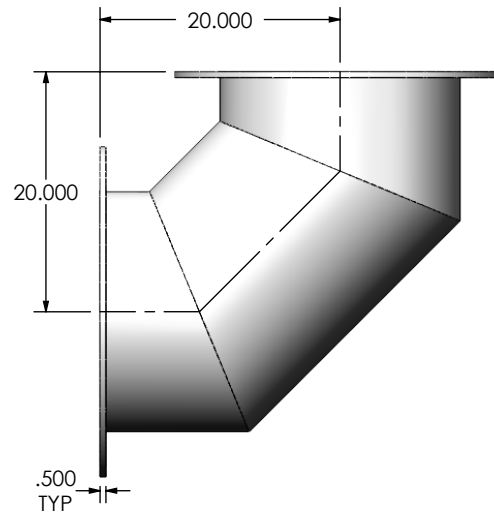


(2) 20" FF FLANGE
150 lb ANSI
STANDARD
BOLT PATTERN



NOTES:



- DO NOT USE EQUIPMENT TO SUPPORT OTHER PARTS OF THE EXHAUST SYSTEM WITHOUT PROPER REINFORCEMENT

MATERIAL CONSTRUCTION:

- 304 STAINLESS STEEL

PAINT:

- NONE

PROJECT NAME	PROPRIETARY AND CONFIDENTIAL THE INFORMATION CONTAINED IN THIS DRAWING IS THE SOLE PROPERTY OF MIRATECH GROUP, LLC. ANY REPRODUCTION IN PART OR AS A WHOLE WITHOUT THE WRITTEN PERMISSION OF MIRATECH GROUP, LLC IS PROHIBITED.	DIMENSIONS ARE IN INCHES UNLESS OTHERWISE SPECIFIED		 			
PROPOSAL NUMBER		DIMENSIONAL TOLERANCES UNLESS OTHERWISE SPECIFIED ANGLES: MACH: $\pm 1^\circ$ INCHES: ± 0.125 BEND: $\pm 3^\circ$ MILLIMETERS: ± 2		EL-20PF1-20PF1-200X0200-3 SD Sales Drawing			
SALES ORDER NO.		DO NOT SCALE DRAWING					
CUSTOMER P.O.		DRAWN	DATE	DRAWING			
		CSF	11/28/2016	EL-20PF1-20PF1-200X0200-3 SD			
	REVIEWED BY	DATE	SIZE	SCALE 1:16	WEIGHT: 177 lb	REV 0	SHEET 1 OF 1
		AJM	11/28/2016	A			