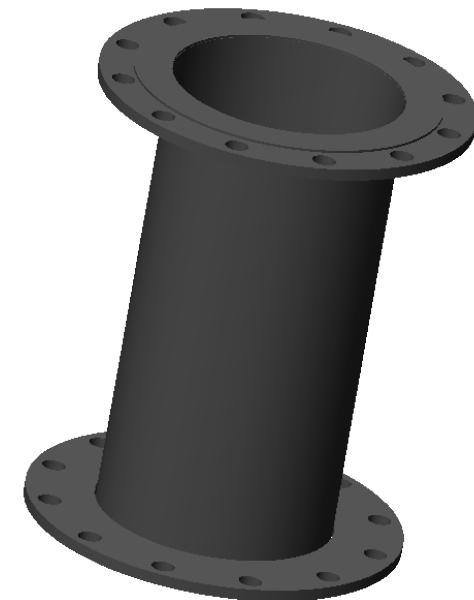
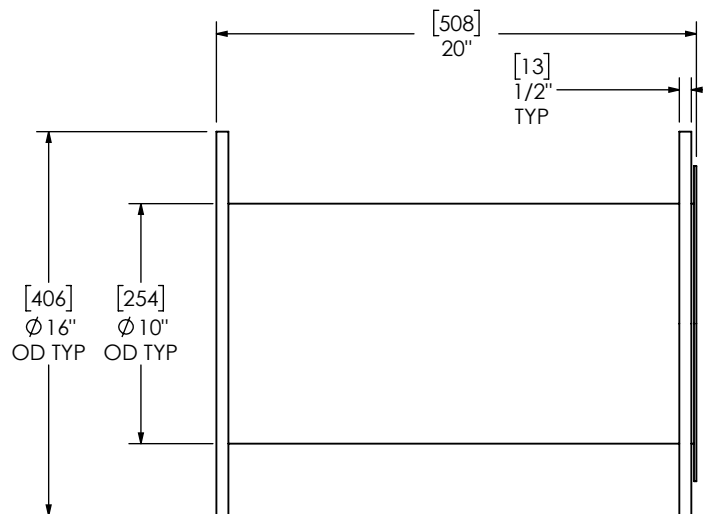
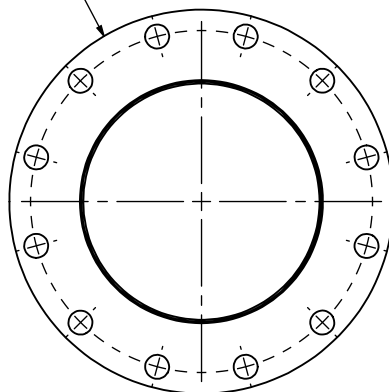


(2) 10" FF FLANGE  
150lb ANSI  
STANDARD  
BOLT PATTERN



FLOATING  
FLANGE

#### NOTES:



- DO NOT USE EQUIPMENT TO SUPPORT OTHER PARTS OF THE EXHAUST SYSTEM WITHOUT PROPER REINFORCEMENT

#### MATERIAL CONSTRUCTION:

- CARBON STEEL

#### PAINT:

- HIGH TEMPERATURE BLACK (MIRATECH COATING SYSTEM 5)

PROJECT NAME	<b>PROPRIETARY AND CONFIDENTIAL</b>  THE INFORMATION CONTAINED IN THIS DRAWING IS THE SOLE PROPERTY OF MIRATECH GROUP, LLC. ANY REPRODUCTION IN PART OR AS A WHOLE WITHOUT THE WRITTEN PERMISSION OF MIRATECH GROUP, LLC IS PROHIBITED.	DIMENSIONS ARE APPROXIMATE IN INCHES UNLESS OTHERWISE SPECIFIED		 		
PROPOSAL NUMBER		DIMENSIONAL TOLERANCES UNLESS OTHERWISE SPECIFIED		EXT-10TF1-10TF2-0200-2		
SALES ORDER NO.		MACH: $\pm 2^\circ$ INCHES: $\pm 1/8$ BEND: $\pm 3^\circ$ MILLIMETERS: $\pm 3$		Sales Drawing		
CUSTOMER P.O.		DO NOT SCALE DRAWING		DRAWING		
		DRAWN	DATE	EXT-10TF1-10TF2-0200-2 SD		
	JFH	11/19/2020	SIZE	SCALE 1:8	WEIGHT: 46.846 lb	REV 0
	REVIEWED BY	DATE	A			
	CAC	11/19/2020				SHEET 1 OF 1

**EXT-10TF1-10TF2-0200-2**  
**Sales Drawing**

REV  
0