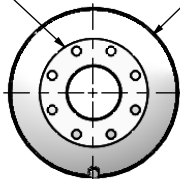


(2) 4" FF FLANGE  
150 lb ANSI  
STANDARD  
BOLT PATTERN



Ø 14.000  
SHELL  
I.D.

Ø 9.000  
O.D. TYP

Ø 4.500  
O.D. TYP

.500  
TYP

1/2" NPT  
DRAIN PORT

60.000

EXHAUST FLOW

**NOTES:**

- DO NOT USE EQUIPMENT TO SUPPORT OTHER PARTS OF THE EXHAUST SYSTEM WITHOUT PROPER REINFORCEMENT

**MATERIAL CONSTRUCTION:**

- CARBON STEEL

**PAINT:**

- HIGH TEMPERATURE BLACK (MIRATECH COATING SYSTEM 5)

PROJECT NAME
PROPOSAL NUMBER
SALES ORDER NO.
CUSTOMER P.O.



**PROPRIETARY AND CONFIDENTIAL**

THE INFORMATION CONTAINED IN THIS DRAWING IS THE SOLE PROPERTY OF MIRATECH GROUP, LLC. ANY REPRODUCTION IN PART OR AS A WHOLE WITHOUT THE WRITTEN PERMISSION OF MIRATECH GROUP, LLC IS PROHIBITED.

DIMENSIONS ARE IN INCHES UNLESS OTHERWISE SPECIFIED

DIMENSIONAL TOLERANCES UNLESS OTHERWISE SPECIFIED	
ANGLES	
MACH: ±1°	INCHES: ±0.125
BEND: ±3°	MILLIMETERS: ±2

DO NOT SCALE DRAWING	
DRAWN	DATE
FES	10/26/2016
REVIEWED BY	DATE
AJM	10/31/2016

			
<b>JHEE0-04PF-2-00000000</b> <b>Sales Drawing</b>			
DRAWING		REV	
JHEE0-04PF-2-00000000 SD		0	
SIZE	SCALE 1:16	WEIGHT: 119 lb	SHEET 1 OF 1
A			