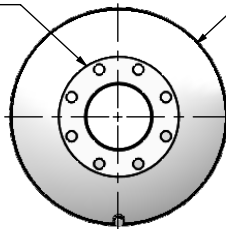


(2) 5" FF FLANGE
150 lb ANSI
STANDARD
BOLT PATTERN



Ø 18.000
SHELL
I.D.

Ø 10.000
O.D. TYP

Ø 5.500
O.D. TYP

.500
TYP

1/2" NPT
DRAIN PORT

68.000

EXHAUST FLOW

NOTES:



- DO NOT USE EQUIPMENT TO SUPPORT OTHER PARTS OF THE EXHAUST SYSTEM WITHOUT PROPER REINFORCEMENT

MATERIAL CONSTRUCTION:

- ALUMINIZED STEEL

PAINT:

- HIGH TEMPERATURE BLACK (MIRATECH COATING SYSTEM 5)

PROJECT NAME	PROPRIETARY AND CONFIDENTIAL THE INFORMATION CONTAINED IN THIS DRAWING IS THE SOLE PROPERTY OF MIRATECH GROUP, LLC. ANY REPRODUCTION IN PART OR AS A WHOLE WITHOUT THE WRITTEN PERMISSION OF MIRATECH GROUP, LLC IS PROHIBITED.	DIMENSIONS ARE IN INCHES UNLESS OTHERWISE SPECIFIED		 		
PROPOSAL NUMBER		DIMENSIONAL TOLERANCES UNLESS OTHERWISE SPECIFIED ANGLES: MACH: ±1° BEND: ±3° INCHES: ±0.125 MILLIMETERS: ±2		JHEE0-05PF-1-00000000 Sales Drawing		
SALES ORDER NO.		DO NOT SCALE DRAWING				
CUSTOMER P.O.		DRAWN FES	DATE 10/26/2016	DRAWING JHEE0-05PF-1-00000000 SD		REV 0
		REVIEWED BY AJM	DATE 10/31/2016	SIZE A	SCALE 1:16	WEIGHT: 180 lb