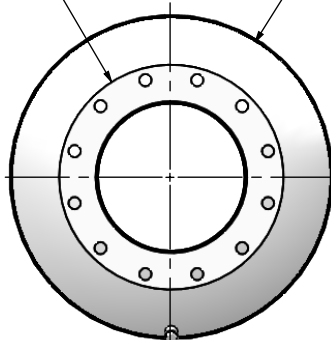
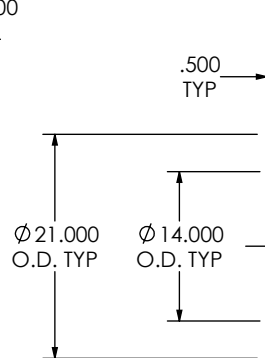


(2) 14" FF FLANGE  
150 lb ANSI  
STANDARD  
BOLT PATTERN

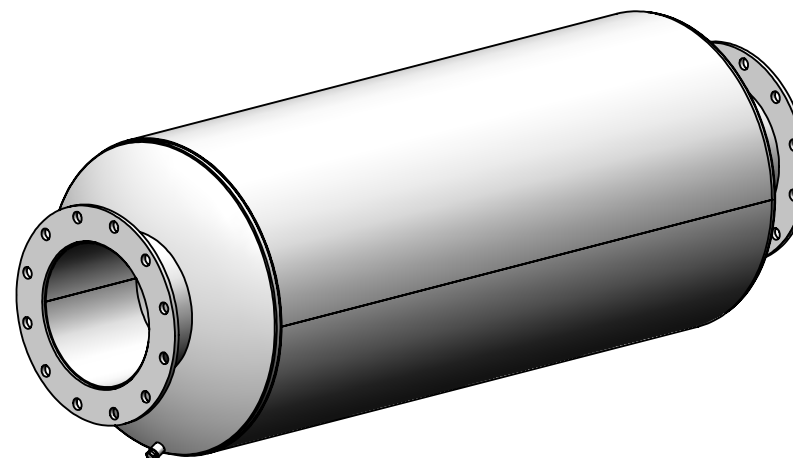


Ø 30.000  
SHELL  
I.D.



1/2" NPT  
DRAIN PORT

EXHAUST FLOW



84.000

#### NOTES:



- DO NOT USE EQUIPMENT TO SUPPORT OTHER PARTS OF THE EXHAUST SYSTEM WITHOUT PROPER REINFORCEMENT

#### MATERIAL CONSTRUCTION:

- 304 STAINLESS STEEL

#### PAINT:

- NONE

PROJECT NAME	<b>PROPRIETARY AND CONFIDENTIAL</b>  THE INFORMATION CONTAINED IN THIS DRAWING IS THE SOLE PROPERTY OF MIRATECH GROUP, LLC. ANY REPRODUCTION IN PART OR AS A WHOLE WITHOUT THE WRITTEN PERMISSION OF MIRATECH GROUP, LLC IS PROHIBITED.	DIMENSIONS ARE IN INCHES UNLESS OTHERWISE SPECIFIED		 	
PROPOSAL NUMBER		DIMENSIONAL TOLERANCES UNLESS OTHERWISE SPECIFIED ANGLES: MACH: ±1° BEND: ±3° INCHES: ±0.125 MILLIMETERS: ±2		<b>JIEE0-14PF-3-00000000</b> <b>Sales Drawing</b>	
SALES ORDER NO.		DO NOT SCALE DRAWING			
CUSTOMER P.O.		DRAWN JFS	DATE 08/08/2016	DRAWING JIEE0-14PF-3-00000000 SD	
		REVIEWED BY EQJ	DATE 08/19/2016	SIZE A	SCALE 1:18
				WEIGHT: 433 lb	SHEET 1 OF 1