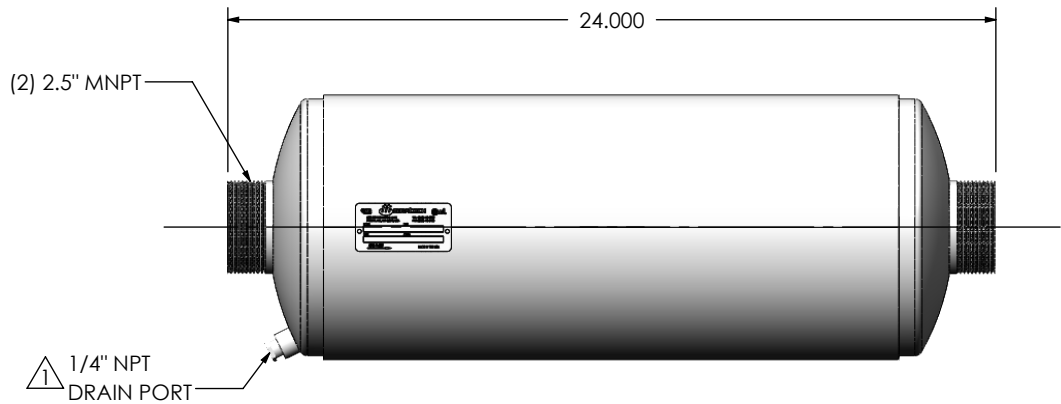
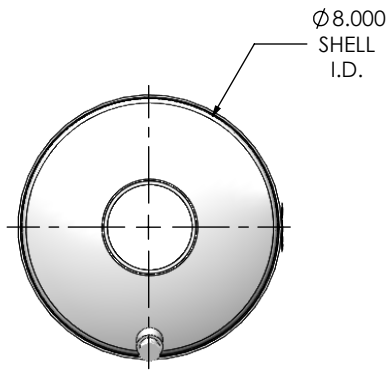
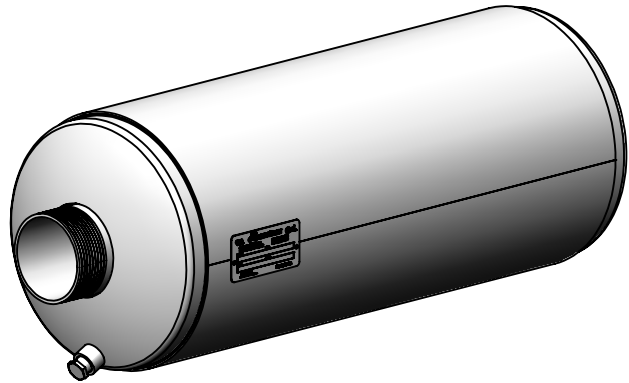


REVISIONS				
REV.	DESCRIPTION	DATE	SHEET(S)	DRAWN BY
0	RELEASED FOR CUSTOMER APPROVAL	8/8/2016	-	JFS
1	UPDATED DRAWIN PLUG DESCRIPTION	10/31/2017	1	SSC



NOTES:



- DO NOT USE EQUIPMENT TO SUPPORT OTHER PARTS OF THE EXHAUST SYSTEM WITHOUT PROPER REINFORCEMENT

MATERIAL CONSTRUCTION:

- ALUMINIZED STEEL

PAINT:

- HIGH TEMPERATURE BLACK (MIRATECH COATING SYSTEM 5)

PROJECT NAME	PROPRIETARY AND CONFIDENTIAL THE INFORMATION CONTAINED IN THIS DRAWING IS THE SOLE PROPERTY OF MIRATECH GROUP, LLC. ANY REPRODUCTION IN PART OR AS A WHOLE WITHOUT THE WRITTEN PERMISSION OF MIRATECH GROUP, LLC IS PROHIBITED.	DIMENSIONS ARE IN INCHES UNLESS OTHERWISE SPECIFIED		 		
PROPOSAL NUMBER		DIMENSIONAL TOLERANCES UNLESS OTHERWISE SPECIFIED ANGLES MACH: $\pm 1^\circ$ BEND: $\pm 3^\circ$		INCHES: ± 0.125 MILLIMETERS: ± 2		
SALES ORDER NO.		DO NOT SCALE DRAWING		JIEE0-25MN-1-00000000 Sales Drawing		
CUSTOMER P.O.		DRAWN JFS	DATE 08/08/2016			
		DRAWING JIEE0-25MN-1-00000000 SD		REV 1		
	REVIEWED BY EQJ	DATE 08/19/2016	SIZE A	SCALE 1:6	WEIGHT: 22 lb	SHEET 1 OF 1