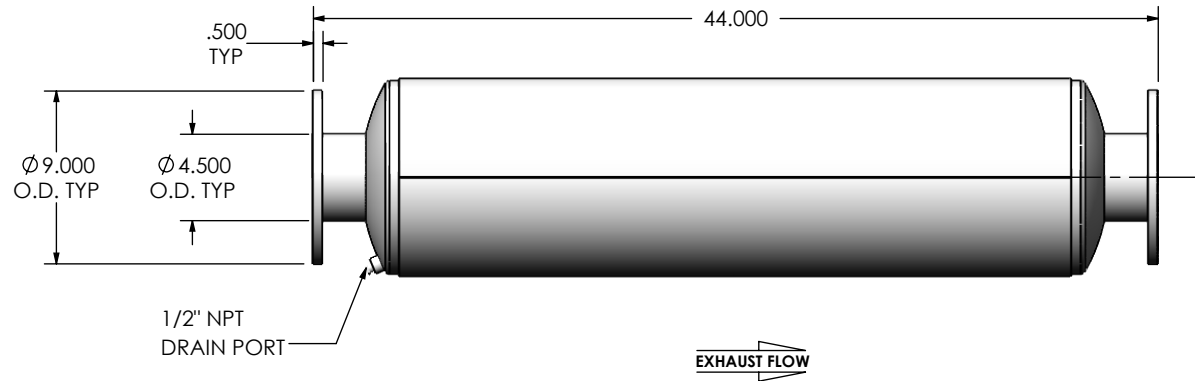
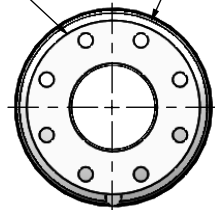


(2) 4" FF FLANGE
150 lb ANSI
STANDARD
BOLT PATTERN

Ø 10.000
SHELL
I.D.



NOTES:



- DO NOT USE EQUIPMENT TO SUPPORT OTHER PARTS OF THE EXHAUST SYSTEM WITHOUT PROPER REINFORCEMENT

MATERIAL CONSTRUCTION:

- ALUMINIZED STEEL

PAINT:

- HIGH TEMPERATURE BLACK (MIRATECH COATING SYSTEM 5)

PROJECT NAME	<p>PROPRIETARY AND CONFIDENTIAL</p> <p>THE INFORMATION CONTAINED IN THIS DRAWING IS THE SOLE PROPERTY OF MIRATECH GROUP, LLC. ANY REPRODUCTION IN PART OR AS A WHOLE WITHOUT THE WRITTEN PERMISSION OF MIRATECH GROUP, LLC IS PROHIBITED.</p>	<p>DIMENSIONS ARE IN INCHES UNLESS OTHERWISE SPECIFIED</p> <p>ANGLES: DIMENSIONAL TOLERANCES UNLESS OTHERWISE SPECIFIED</p> <p>MACH: ±1" INCHES: ±0.125</p> <p>BEND: ±3" MILLIMETERS: ±2</p>		 		
PROPOSAL NUMBER		DO NOT SCALE DRAWING		<p>JREE0-04PF-1-00000000</p> <p>Sales Drawing</p>		
SALES ORDER NO.		DRAWN	DATE	DRAWING		
CUSTOMER P.O.		JFS	08/08/2016	JREE0-04PF-1-00000000 SD_0		
	REVIEWED BY	DATE	SIZE	SCALE	WEIGHT	
	EQJ	08/19/2016	A	1:10	67 lb	
					SHEET 1 OF 1	