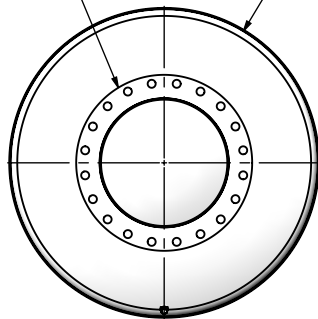


(2) 20" FF FLANGE
150 lb ANSI
STANDARD
BOLT PATTERN

Ø 48.000
SHELL
I.D.



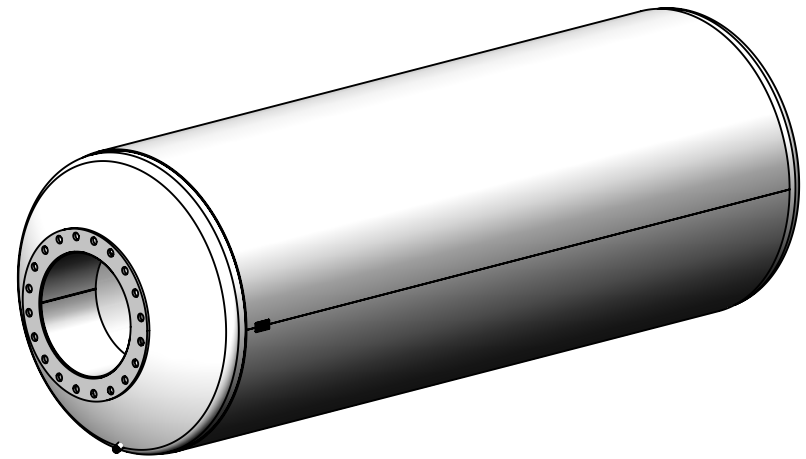
.500
TYP

Ø 27.500
O.D. TYP

Ø 20.000
O.D. TYP

1/2" NPT
DRAIN PORT

EXHAUST FLOW



NOTES:

- DO NOT USE EQUIPMENT TO SUPPORT OTHER PARTS OF THE EXHAUST SYSTEM WITHOUT PROPER REINFORCEMENT

MATERIAL CONSTRUCTION:

- CARBON STEEL

PAINT:

- HIGH TEMPERATURE BLACK (MIRATECH COATING SYSTEM 5)

PROJECT NAME

PROPOSAL NUMBER

SALES ORDER NO.

CUSTOMER P.O.

PROPRIETARY AND CONFIDENTIAL

THE INFORMATION CONTAINED IN THIS DRAWING IS THE SOLE PROPERTY OF MIRATECH GROUP, LLC. ANY REPRODUCTION IN PART OR AS A WHOLE WITHOUT THE WRITTEN PERMISSION OF MIRATECH GROUP, LLC IS PROHIBITED.

DIMENSIONS ARE IN INCHES
UNLESS OTHERWISE SPECIFIED

ANGLES:
MACH: ±1°
BEND: ±3°

INCHES: ±0.125
MILLIMETERS: ±2

DO NOT SCALE DRAWING

DRAWN JFS DATE 08/08/2016

REVIEWED BY EQJ DATE 08/19/2016



MIRATECH

em
PRODUCTS®

JREE0-20PF-2-00000000
Sales Drawing

DRAWING

JREE0-20PF-2-00000000 SD

REV
0

SIZE
A

SCALE 1:30

WEIGHT: 1099 lb

SHEET 1 OF 1