

NOTES:

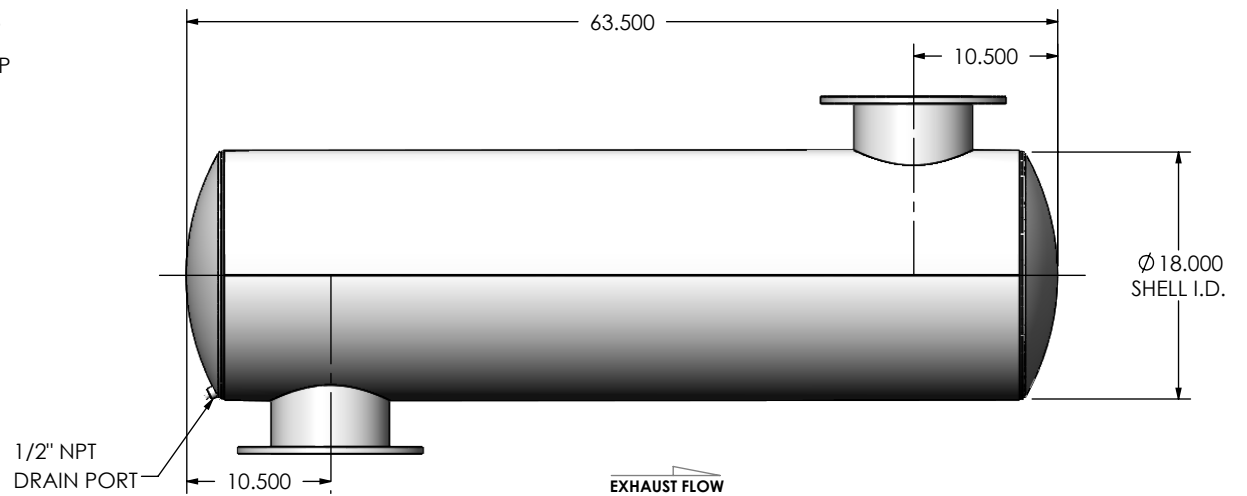
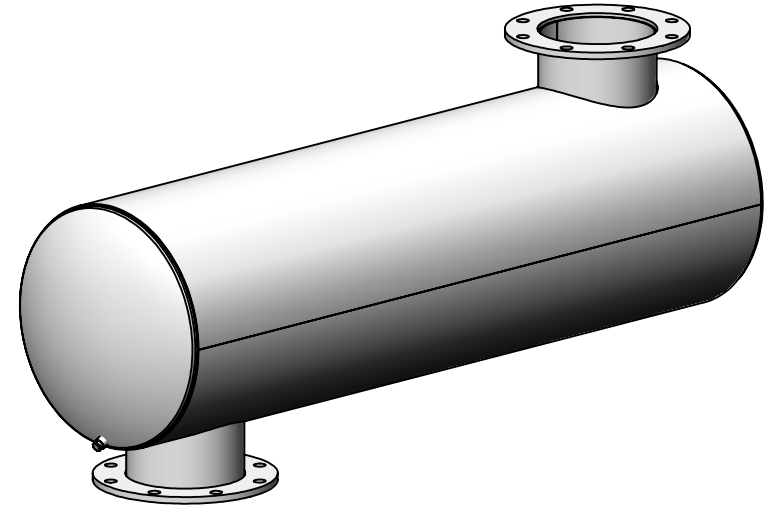
- DO NOT USE EQUIPMENT TO SUPPORT OTHER PARTS OF THE EXHAUST SYSTEM WITHOUT PROPER REINFORCEMENT



MATERIAL CONSTRUCTION:

- ALUMINIZED STEEL

PAINT:

- HIGH TEMPERATURE BLACK
(MIRATECH COATING SYSTEM 5)



MATERIAL CONSTRUCTION:		PROJECT NAME		<div>PROPRIETARY AND CONFIDENTIAL</div> <div>THE INFORMATION CONTAINED IN THIS DRAWING IS THE SOLE PROPERTY OF MIRATECH GROUP, LLC. ANY REPRODUCTION IN PART OR AS A WHOLE WITHOUT THE WRITTEN PERMISSION OF MIRATECH GROUP, LLC IS PROHIBITED.</div>		DIMENSIONS ARE IN INCHES UNLESS OTHERWISE SPECIFIED							
• ALUMINIZED STEEL		PROPOSAL NUMBER				DIMENSIONAL TOLERANCES UNLESS OTHERWISE SPECIFIED: ANGLES: MACH: ±1° BEND: ±3°		INCHES: ±0.125 MILLIMETERS: ±2		<div>JRGA0-08PF-1-00002HV0</div> <div>Sales Drawing</div>			
PAINT:		SALES ORDER NO.				DO NOT SCALE DRAWING		DRAWN				DATE	
• HIGH TEMPERATURE BLACK (MIRATECH COATING SYSTEM 5)		CUSTOMER P.O.						JFS				08/08/2016	
						REVIEWED BY		DATE		SIZE			
						EQJ		08/19/2016		A			
										SCALE 1:14			
										WEIGHT: 195 lb			
										SHEET 1 OF 1			