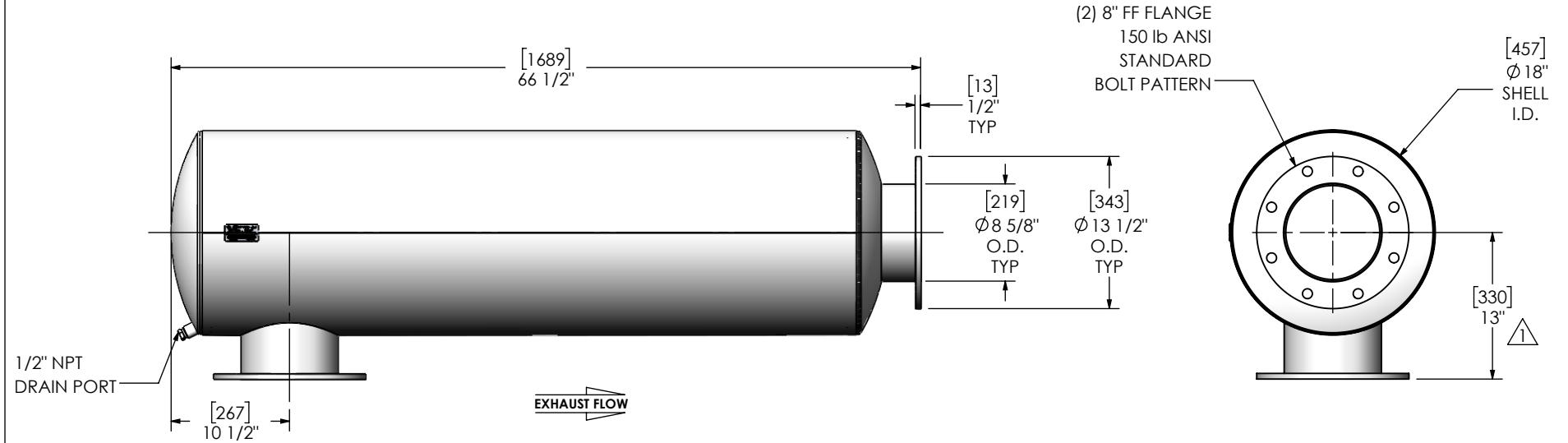
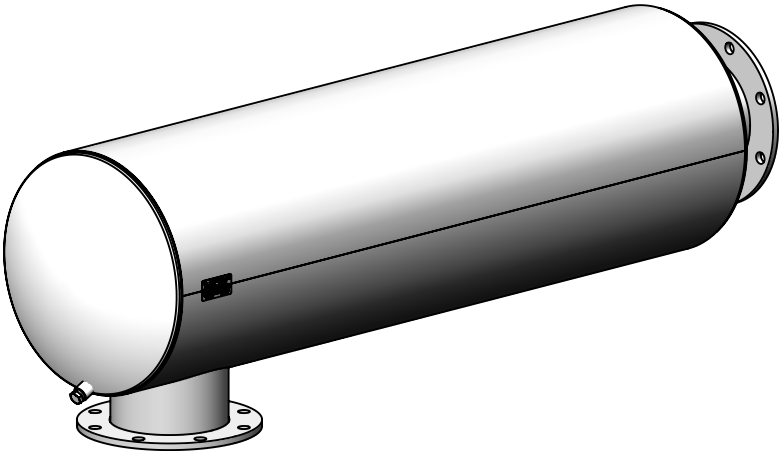





REV	DATE	BY	COMMENTS	SHEET NO.
1	3/25/2019	CAC	CORRECTED WEIGHT, ADDED "F" DIM, AND UPDATED SHEET FORMAT TO USE FRACTIONS.	1



- NOTES:**
- DO NOT USE EQUIPMENT TO SUPPORT OTHER PARTS OF THE EXHAUST SYSTEM WITHOUT PROPER REINFORCEMENT

- MATERIAL CONSTRUCTION:**
- ALUMINIZED STEEL
- PAINT:**
- HIGH TEMPERATURE BLACK (MIRATECH COATING SYSTEM 5)

PROJECT NAME	<b>PROPRIETARY AND CONFIDENTIAL</b>  THE INFORMATION CONTAINED IN THIS DRAWING IS THE SOLE PROPERTY OF MIRATECH GROUP, LLC. ANY REPRODUCTION IN PART OR AS A WHOLE WITHOUT THE WRITTEN PERMISSION OF MIRATECH GROUP, LLC IS PROHIBITED.	DIMENSIONS ARE APPROXIMATE IN INCHES UNLESS OTHERWISE SPECIFIED					
PROPOSAL NUMBER		DIMENSIONAL TOLERANCES UNLESS OTHERWISE SPECIFIED		<b>JRGE0-08PF-1-00000030</b> <b>Sales Drawing</b>			
SALES ORDER NO.		ANGLES MACH: ±2° BEND: ±3°	INCHES: ±1/8 MILLIMETERS: ±3				
CUSTOMER P.O.		DO NOT SCALE DRAWING					
		DRAWN JFS	DATE 08/08/2016	DRAWING JRGE0-08PF-1-00000030 SD			REV 1
	REVIEWED BY EQJ	DATE 08/19/2016	SIZE A	SCALE 1:14	WEIGHT: 172 lb 	SHEET 1 OF 1	