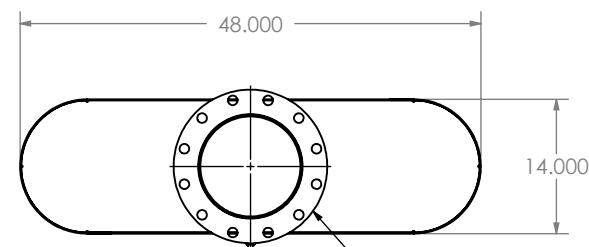
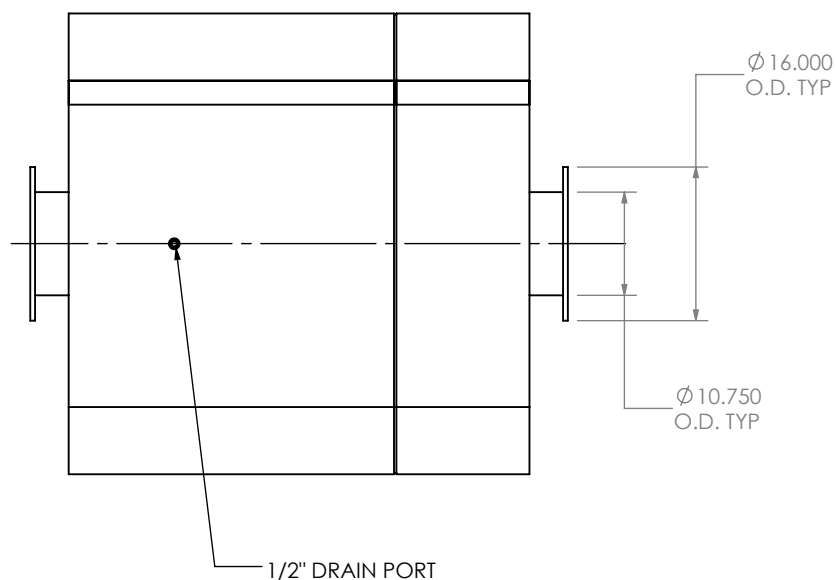


EXHAUST FLOW



(2) 10" FF FLANGE  
150 lb ANSI  
STANDARD  
BOLT PATTERN



#### NOTES:

- DO NOT USE EQUIPMENT TO SUPPORT OTHER PARTS OF THE EXHAUST SYSTEM WITHOUT PROPER REINFORCEMENT

#### MATERIAL CONSTRUCTION:

- CARBON STEEL

#### PAINT:

- HIGH TEMPERATURE BLACK (MIRATECH COATING SYSTEM 5)

PROJECT NAME
PROPOSAL NUMBER
SALES ORDER NO.
CUSTOMER P.O.

#### PROPRIETARY AND CONFIDENTIAL



THE INFORMATION CONTAINED IN THIS DRAWING IS THE SOLE PROPERTY OF MIRATECH GROUP, LLC. ANY REPRODUCTION IN PART OR AS A WHOLE WITHOUT THE WRITTEN PERMISSION OF MIRATECH GROUP, LLC IS PROHIBITED.

DIMENSIONS ARE IN INCHES  
UNLESS OTHERWISE SPECIFIED

DIMENSIONAL TOLERANCES UNLESS OTHERWISE SPECIFIED	
ANGLES:	
MACH: $\pm 1^\circ$	INCHES: $\pm 0.125$
BEND: $\pm 3^\circ$	MILLIMETERS: $\pm 2$

DO NOT SCALE DRAWING

DRAWN	DATE
FES	9/16/2016
REVIEWED BY	DATE
AJM	09/30/2016

 <b>MIRATECH</b>		 <b>em</b> PRODUCTS®	
<b>OCEE0-10PF-2-00000000</b> <b>Sales Drawing</b>			
DRAWING		OCEE0-10PF-2-00000000 SD	
SIZE <b>A</b>	SCALE 1:20	WEIGHT: 350 lb	SHEET 1 OF 1