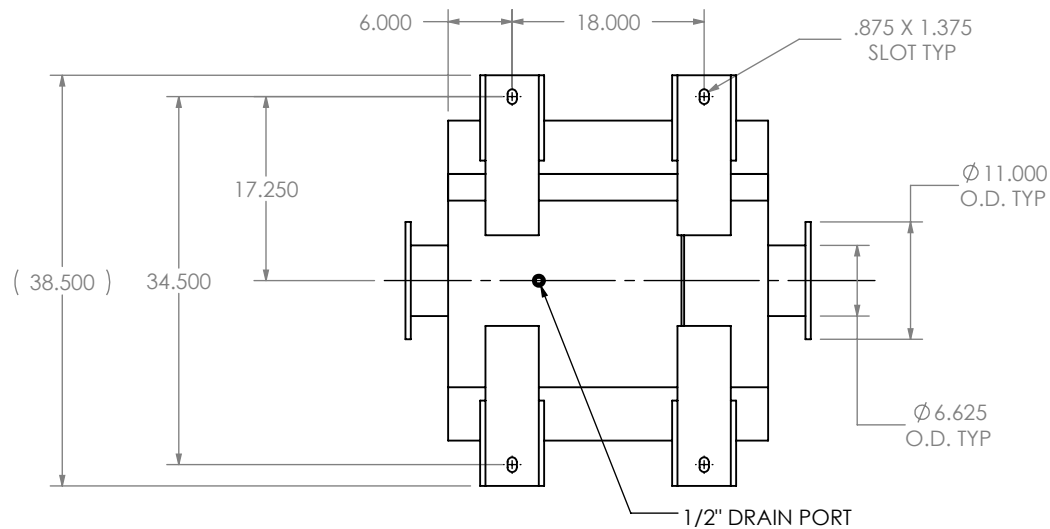
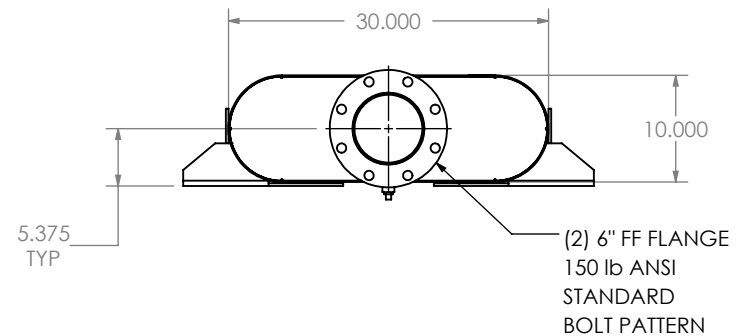


EXHAUST FLOW



NOTES:

- DO NOT USE EQUIPMENT TO SUPPORT OTHER PARTS OF THE EXHAUST SYSTEM WITHOUT PROPER REINFORCEMENT

MATERIAL CONSTRUCTION:

- CARBON STEEL

PAINT:

- HIGH TEMPERATURE BLACK (MIRATECH COATING SYSTEM 5)

| |
|-----------------|
| PROJECT NAME |
| PROPOSAL NUMBER |
| SALES ORDER NO. |
| CUSTOMER P.O. |

PROPRIETARY AND CONFIDENTIAL



THE INFORMATION CONTAINED IN THIS DRAWING IS THE SOLE PROPERTY OF MIRATECH GROUP, LLC. ANY REPRODUCTION IN PART OR AS A WHOLE WITHOUT THE WRITTEN PERMISSION OF MIRATECH GROUP, LLC IS PROHIBITED.

DIMENSIONS ARE IN INCHES UNLESS OTHERWISE SPECIFIED

| | |
|---|----------------------|
| DIMENSIONAL TOLERANCES UNLESS OTHERWISE SPECIFIED | |
| ANGLES: | |
| MACH: $\pm 1^\circ$ | INCHES: ± 0.125 |
| BEND: $\pm 3^\circ$ | MILLIMETERS: ± 2 |

DO NOT SCALE DRAWING

| | |
|-------------|------------|
| DRAWN | DATE |
| FES | 9/16/2016 |
| REVIEWED BY | DATE |
| AJM | 09/30/2016 |

| | | |
|---|------------|---|
|  MIRATECH | |  |
| OCEE0B-06PF-2-00000000 Sales Drawing | | |
| DRAWING | | REV |
| OCEE0B-06PF-2-00000000 SD | | 0 |
| SIZE | SCALE 1:18 | WEIGHT: 197 lb |
| A | | SHEET 1 OF 1 |