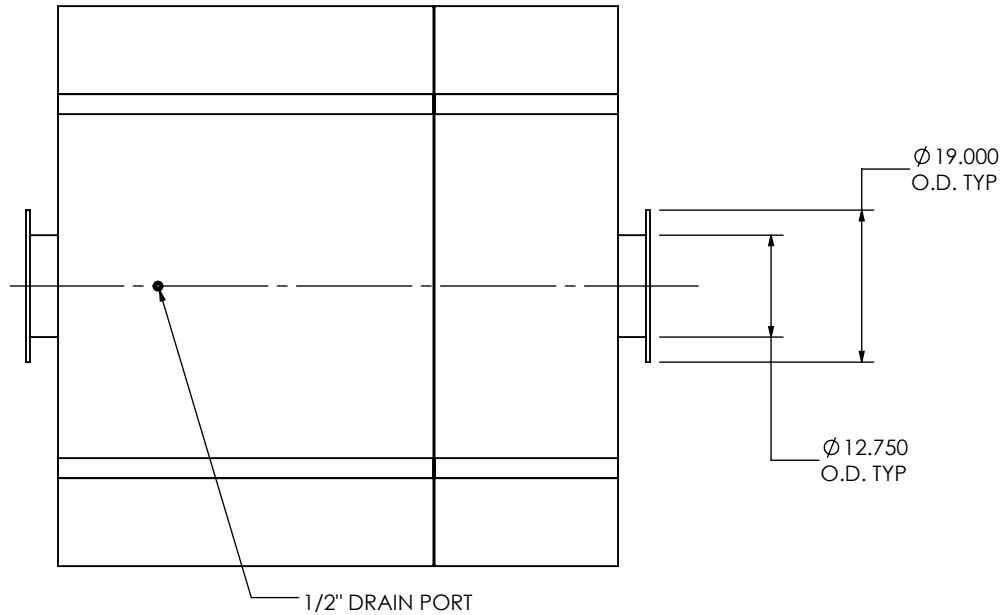
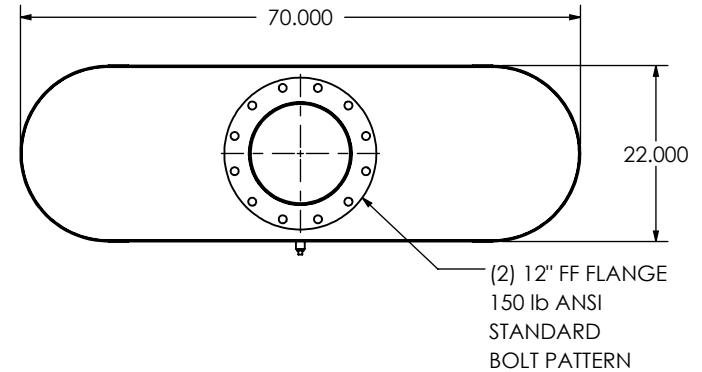


EXHAUST FLOW



NOTES:



- DO NOT USE EQUIPMENT TO SUPPORT OTHER PARTS OF THE EXHAUST SYSTEM WITHOUT PROPER REINFORCEMENT

MATERIAL CONSTRUCTION:

- CARBON STEEL

PAINT:

- HIGH TEMPERATURE BLACK (MIRATECH COATING SYSTEM 5)

PROJECT NAME	PROPRIETARY AND CONFIDENTIAL THE INFORMATION CONTAINED IN THIS DRAWING IS THE SOLE PROPERTY OF MIRATECH GROUP, LLC. ANY REPRODUCTION IN PART OR AS A WHOLE WITHOUT THE WRITTEN PERMISSION OF MIRATECH GROUP, LLC IS PROHIBITED.	DIMENSIONS ARE IN INCHES UNLESS OTHERWISE SPECIFIED		 		
PROPOSAL NUMBER		DIMENSIONAL TOLERANCES UNLESS OTHERWISE SPECIFIED ANGLES: MACH: ±1° BEND: ±3°		INCHES: ±0.125 MILLIMETERS: ±2		
SALES ORDER NO.		DO NOT SCALE DRAWING		OHEE2-12PF-2-00000000 Sales Drawing		
CUSTOMER P.O.		DRAWN	DATE			
		FES	9/16/2016	DRAWING	OHEE2-10PF-2-00000000 SD	REV 0
	REVIEWED BY AJM	DATE 09/30/2016	SIZE A	SCALE 1:24	WEIGHT: 1180 lb	SHEET 1 OF 1