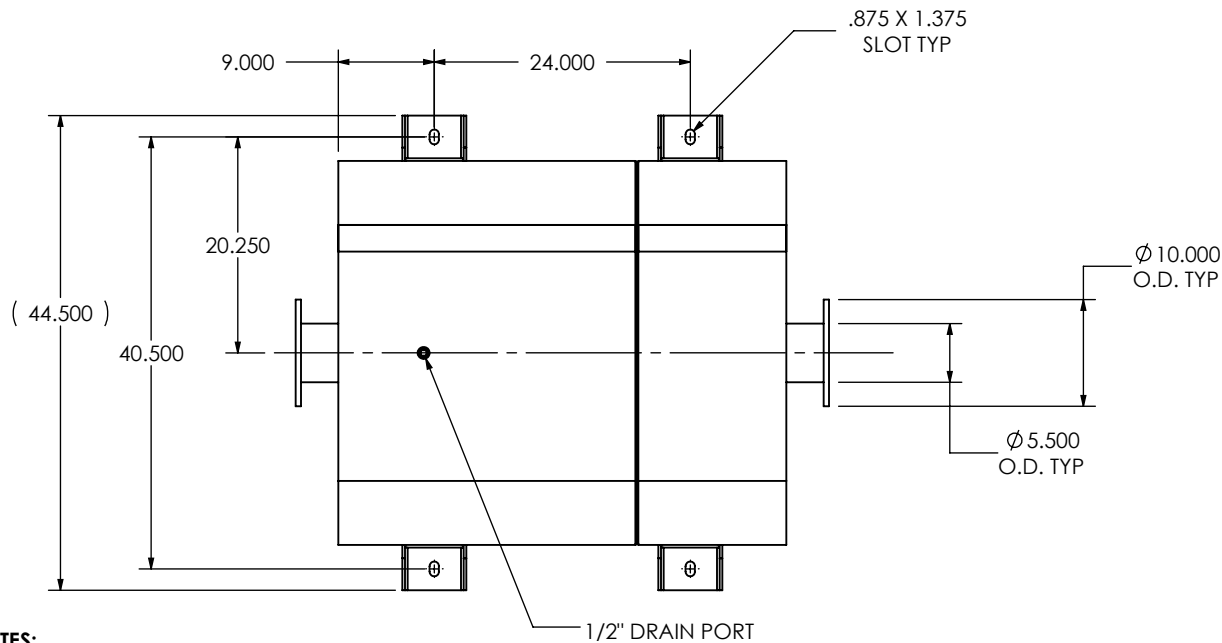
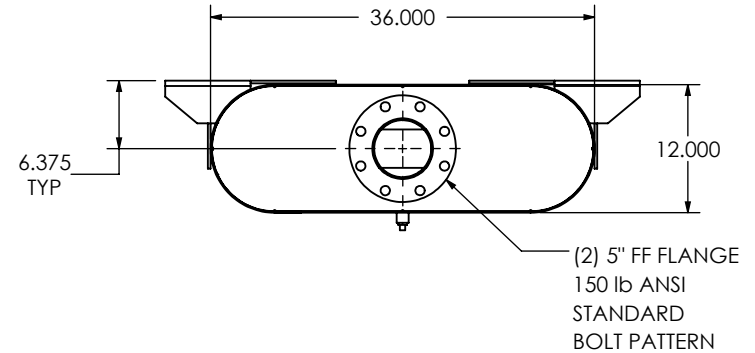


EXHAUST FLOW



#### NOTES:

- DO NOT USE EQUIPMENT TO SUPPORT OTHER PARTS OF THE EXHAUST SYSTEM WITHOUT PROPER REINFORCEMENT

#### MATERIAL CONSTRUCTION:

- CARBON STEEL

#### PAINT:

- HIGH TEMPERATURE BLACK (MIRATECH COATING SYSTEM 5)

PROJECT NAME

PROPOSAL NUMBER

SALES ORDER NO.

CUSTOMER P.O.

#### PROPRIETARY AND CONFIDENTIAL

THE INFORMATION CONTAINED IN THIS DRAWING IS THE SOLE PROPERTY OF MIRATECH GROUP, LLC. ANY REPRODUCTION IN PART OR AS A WHOLE WITHOUT THE WRITTEN PERMISSION OF MIRATECH GROUP, LLC IS PROHIBITED.

DIMENSIONS ARE IN INCHES  
UNLESS OTHERWISE SPECIFIED

DIMENSIONAL TOLERANCES UNLESS OTHERWISE SPECIFIED  
ANGLES:  
MACH:  $\pm 1^\circ$  INCHES:  $\pm 0.125$   
BEND:  $\pm 3^\circ$  MILLIMETERS:  $\pm 2$

DO NOT SCALE DRAWING

DRAWN FES DATE 9/16/2016

REVIEWED BY AJM DATE 09/30/2016



MIRATECH

em  
PRODUCTS<sup>®</sup>

OHEE2T-05PF-2-00000000  
Sales Drawing

DRAWING	OHEE2T-05PF-2-00000000 SD	REV 0
SIZE A	SCALE 1:18	WEIGHT: 363 lb
		SHEET 1 OF 1