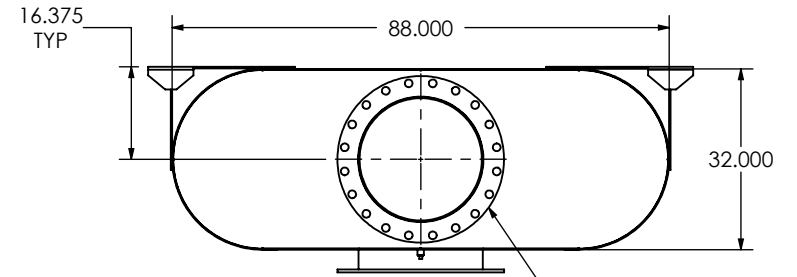
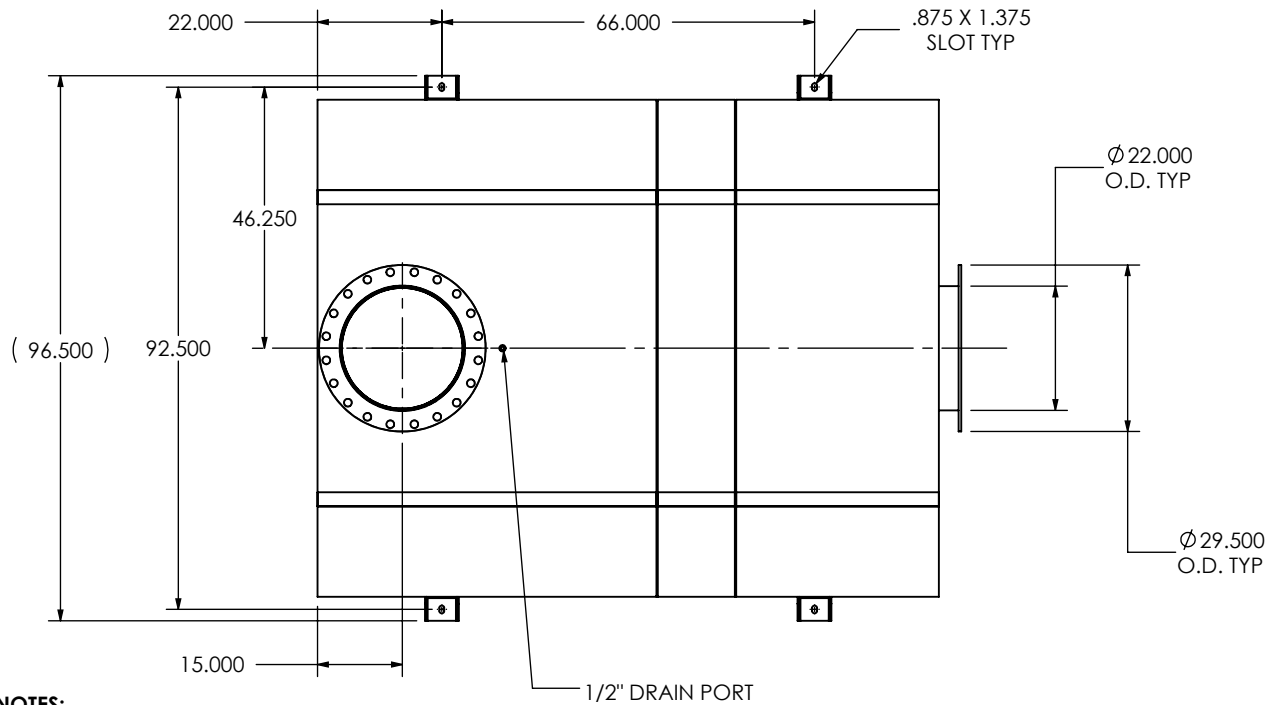


EXHAUST FLOW



(2) 22" FF FLANGE  
150 lb ANSI  
STANDARD  
BOLT PATTERN



#### NOTES:

- DO NOT USE EQUIPMENT TO SUPPORT OTHER PARTS OF THE EXHAUST SYSTEM WITHOUT PROPER REINFORCEMENT

#### MATERIAL CONSTRUCTION:

- 304 STAINLESS STEEL

#### PAINT:



- NONE

PROJECT NAME	<b>PROPRIETARY AND CONFIDENTIAL</b>  THE INFORMATION CONTAINED IN THIS DRAWING IS THE SOLE PROPERTY OF MIRATECH GROUP, LLC. ANY REPRODUCTION IN PART OR AS A WHOLE WITHOUT THE WRITTEN PERMISSION OF MIRATECH GROUP, LLC IS PROHIBITED.
PROPOSAL NUMBER	
SALES ORDER NO.	
CUSTOMER P.O.	

#### PROPRIETARY AND CONFIDENTIAL

THE INFORMATION CONTAINED IN THIS DRAWING IS THE SOLE PROPERTY OF MIRATECH GROUP, LLC. ANY REPRODUCTION IN PART OR AS A WHOLE WITHOUT THE WRITTEN PERMISSION OF MIRATECH GROUP, LLC IS PROHIBITED.

DIMENSIONS ARE IN INCHES UNLESS OTHERWISE SPECIFIED			
DIMENSIONAL TOLERANCES UNLESS OTHERWISE SPECIFIED			
ANGLES			
MACH: $\pm 1^{\circ}$	INCHES: $\pm 0.125$		
BEND: $\pm 3^{\circ}$	MILLIMETERS: $\pm 2$		
DO NOT SCALE DRAWING			
DRAWN		DATE	
FES		9/16/2016	
REVIEWED BY		DATE	
AJM		09/31/2016	

 <b>MIRATECH</b>		
<b>OSCBE2T-22PF-3-0000004A</b> <b>Sales Drawing</b>		
DRAWING		REV <b>0</b>
OSCBE2T-22PF-3-0000004A SD		
SIZE <b>A</b>	SCALE 1:34	WEIGHT: 2781 lb
		SHEET 1 OF 1