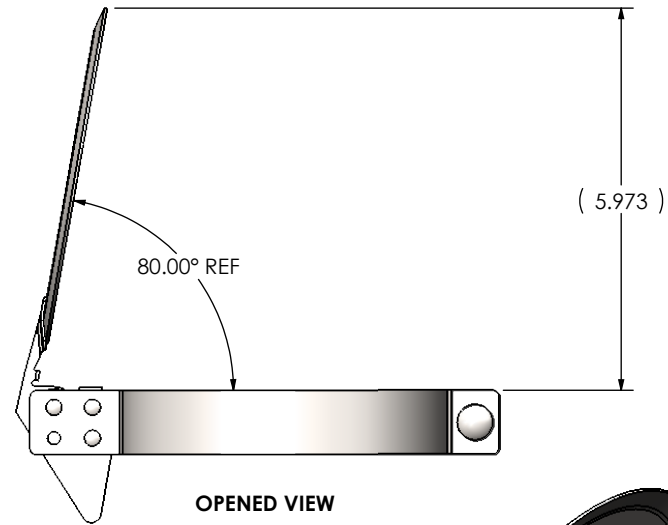
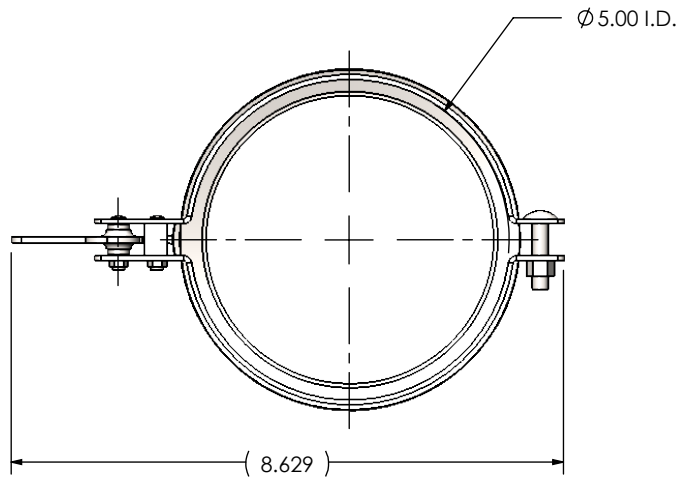


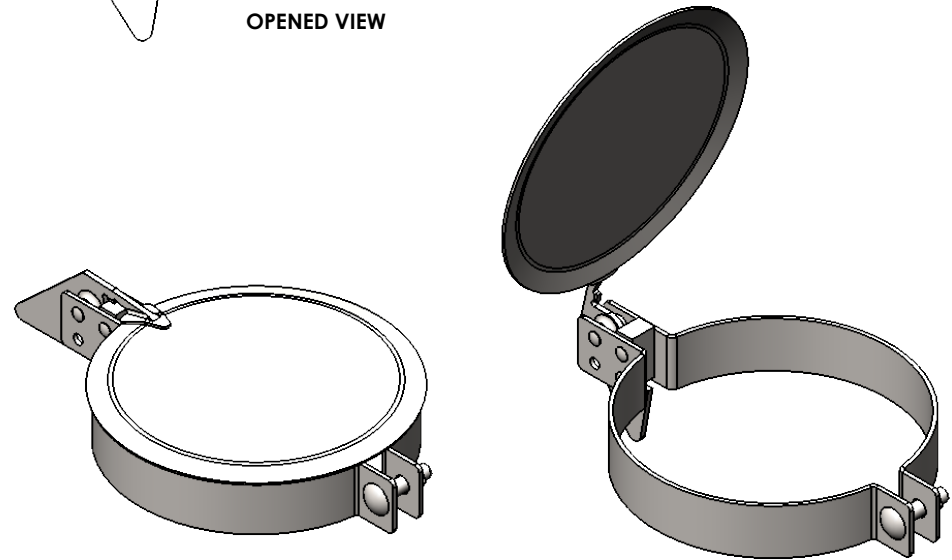
FRONT VIEW



OPENED VIEW



BOTTOM VIEW



NOTES:

- STACK SHOULD EXTEND ABOVE CLAMP APPROXIMATELY 0.25" WHEN PROPERLY INSTALLED

MATERIAL CONSTRUCTION:

- CARBON STEEL

PAINT:

- HIGH TEMPERATURE BLACK

PROJECT NAME
PROPOSAL NUMBER
SALES ORDER NO.
CUSTOMER P.O.

PROPRIETARY AND CONFIDENTIAL



THE INFORMATION CONTAINED IN THIS DRAWING IS THE SOLE PROPERTY OF MIRATECH GROUP, LLC. ANY REPRODUCTION IN PART OR AS A WHOLE WITHOUT THE WRITTEN PERMISSION OF MIRATECH GROUP, LLC IS PROHIBITED.

DIMENSIONS ARE IN INCHES UNLESS OTHERWISE SPECIFIED

DIMENSIONAL TOLERANCES UNLESS OTHERWISE SPECIFIED	
ANGLES:	
MACH: ±1"	INCHES: ±0.125
BEND: ±3"	MILLIMETERS: ±2

DO NOT SCALE DRAWING

DRAWN	DATE
SSC	4/13/2017
REVIEWED BY	DATE
AJM	4/13/2017

			
RC-0500 Sales Drawing			
DRAWING		RC-0500 SD	
REV	0	SCALE 1:3	WEIGHT: 1 lb
SHEET 1 OF 1			