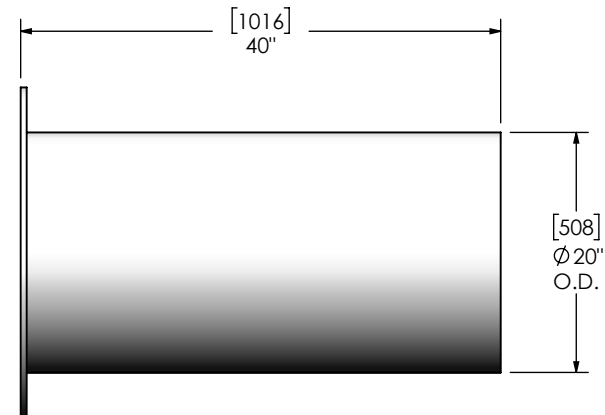
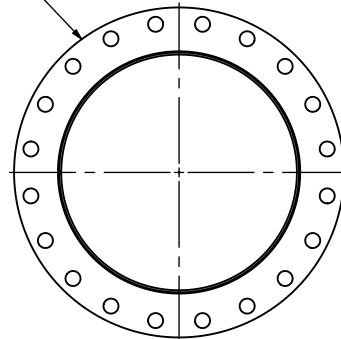


20" FF FLANGE
150 lb ANSI
STANDARD
BOLT PATTERN



NOTES:



- DO NOT USE EQUIPMENT TO SUPPORT OTHER PARTS OF THE EXHAUST SYSTEM WITHOUT PROPER REINFORCEMENT

MATERIAL CONSTRUCTION:

- CARBON STEEL

PAINT:

- HIGH TEMPERATURE BLACK (MIRATECH COATING SYSTEM 5)

| | | | | | | | |
|-----------------|---|---|---------------------|---|----------------|---|--|
| PROJECT NAME | PROPRIETARY AND CONFIDENTIAL THE INFORMATION CONTAINED IN THIS DRAWING IS THE SOLE PROPERTY OF MIRATECH GROUP, LLC. ANY REPRODUCTION IN PART OR AS A WHOLE WITHOUT THE WRITTEN PERMISSION OF MIRATECH GROUP, LLC IS PROHIBITED. | DIMENSIONS ARE APPROXIMATE IN INCHES UNLESS OTHERWISE SPECIFIED | |  | |  | |
| PROPOSAL NUMBER | | DIMENSIONAL TOLERANCES UNLESS OTHERWISE SPECIFIED | | STK-20PF1-0400-2 | | | |
| SALES ORDER NO. | | MACH: $\pm 2^\circ$ INCHES: $\pm 1/8$ BEND: $\pm 3^\circ$ MILLIMETERS: ± 3 | | Sales Drawing | | | |
| CUSTOMER P.O. | | DO NOT SCALE DRAWING | | | | | |
| | | DRAWN | DATE | DRAWING | | REV | |
| | SSC | 4/8/2019 | STK-20PF1-0400-2 SD | | 0 | | |
| | REVIEWED BY | DATE | SIZE | SCALE 1:16 | WEIGHT: 160 lb | SHEET 1 OF 1 | |
| | CAC | 4/8/2019 | A | | | | |