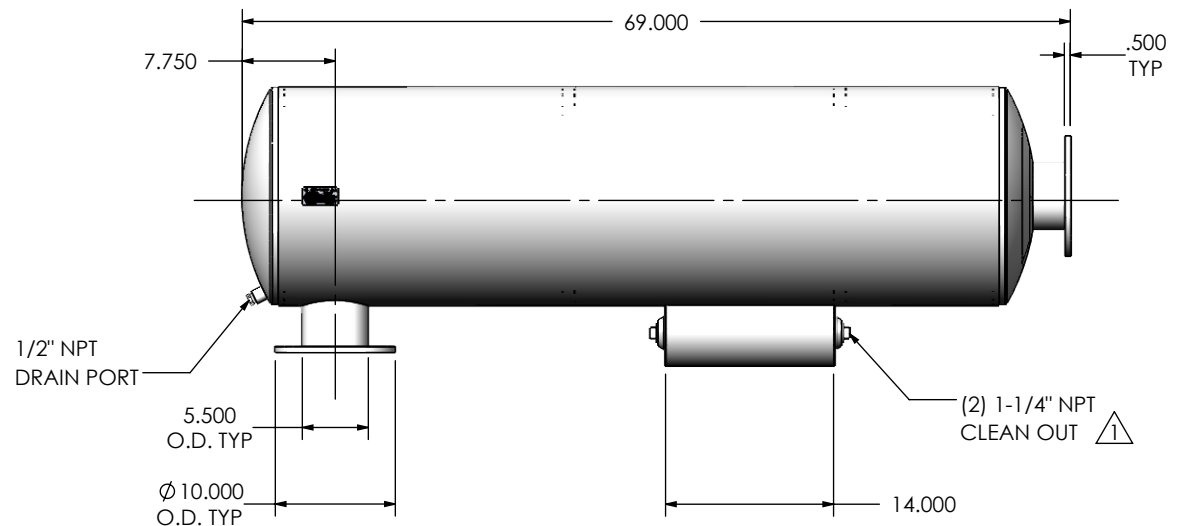
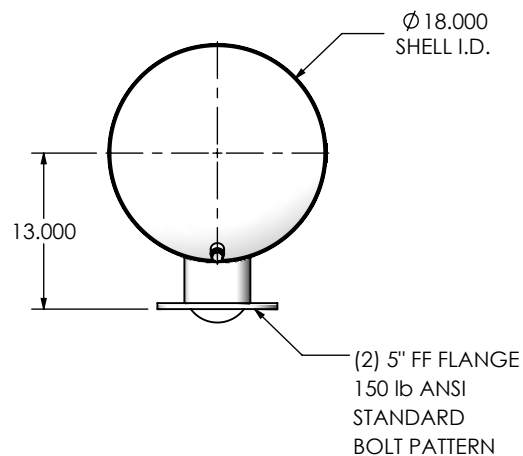
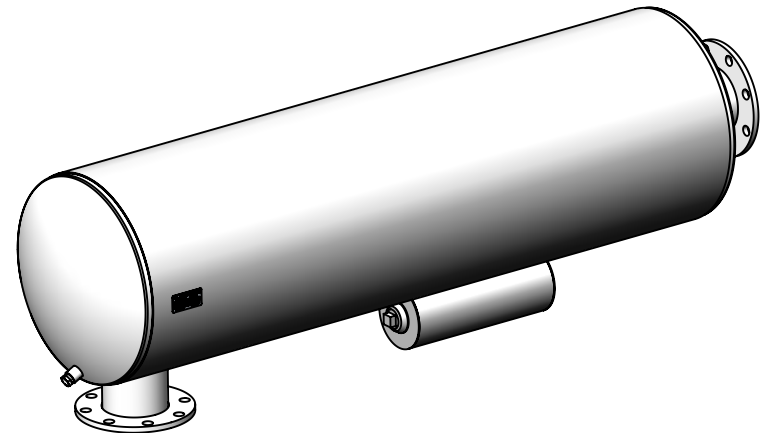


REVISIONS				
REV.	DESCRIPTION	DATE	SHEET(S)	DRAWN BY
0	INITIAL RELEASE	11/04/2016	1	FES
1	CLEAN OUT WAS 1-1/2 NPT	12/11/2017	1	FES



#### NOTES:

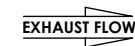
- DO NOT USE EQUIPMENT TO SUPPORT OTHER PARTS OF THE EXHAUST SYSTEM WITHOUT PROPER REINFORCEMENT



#### MATERIAL CONSTRUCTION:

- ALUMINIZED STEEL

#### PAINT:

- HIGH TEMPERATURE BLACK (MIRATECH COATING SYSTEM 5)



PROJECT NAME	<b>PROPRIETARY AND CONFIDENTIAL</b>  THE INFORMATION CONTAINED IN THIS DRAWING IS THE SOLE PROPERTY OF MIRATECH GROUP, LLC. ANY REPRODUCTION IN PART OR AS A WHOLE WITHOUT THE WRITTEN PERMISSION OF MIRATECH GROUP, LLC IS PROHIBITED.	DIMENSIONS ARE IN INCHES UNLESS OTHERWISE SPECIFIED		 		
PROPOSAL NUMBER		DIMENSIONAL TOLERANCES UNLESS OTHERWISE SPECIFIED ANGLES: MACH: ±1° INCHES: ±0.125 BEND: ±3° MILLIMETERS: ±2		<b>SUHGE0-05PF-1-00000028</b> <b>Sales Drawing</b>		
SALES ORDER NO.		DO NOT SCALE DRAWING				
CUSTOMER P.O.		DRAWN FES	DATE 11/1/2016	DRAWING SUHGE0-05PF-1-00000028 SD		REV 1
	REVIEWED BY AJM	DATE 11/4/2016	SIZE A	SCALE 1:16	WEIGHT: 162 lb	SHEET 1 OF 1

REV  
1