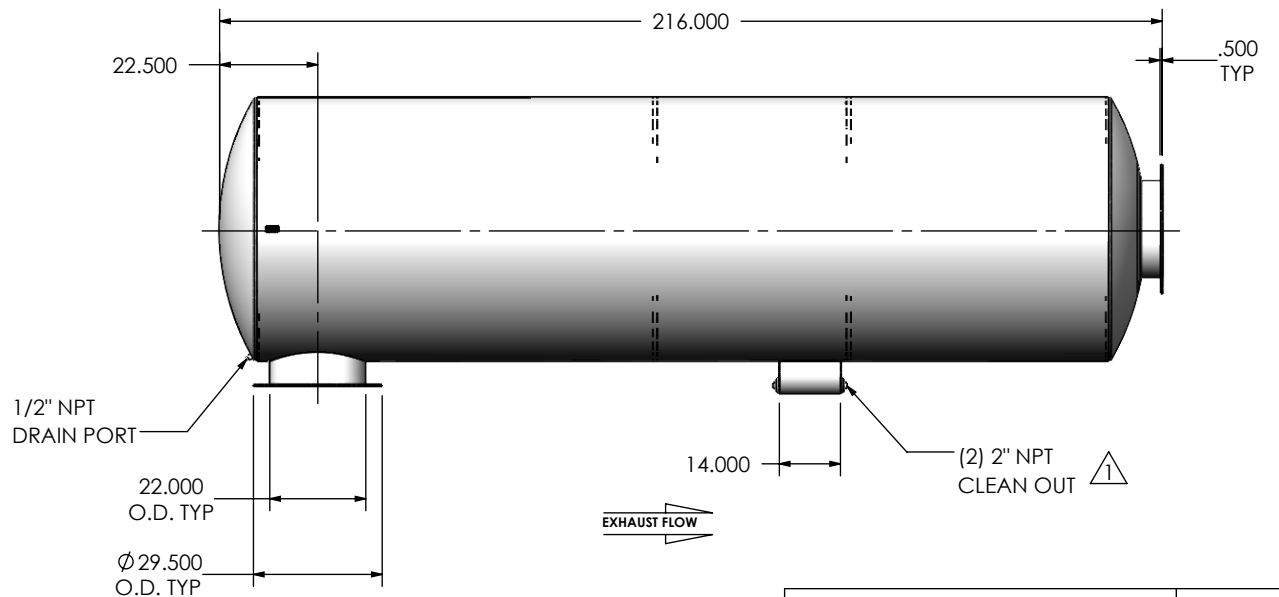
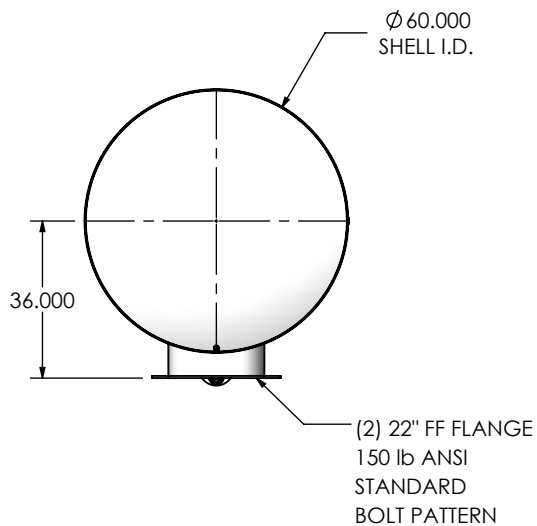
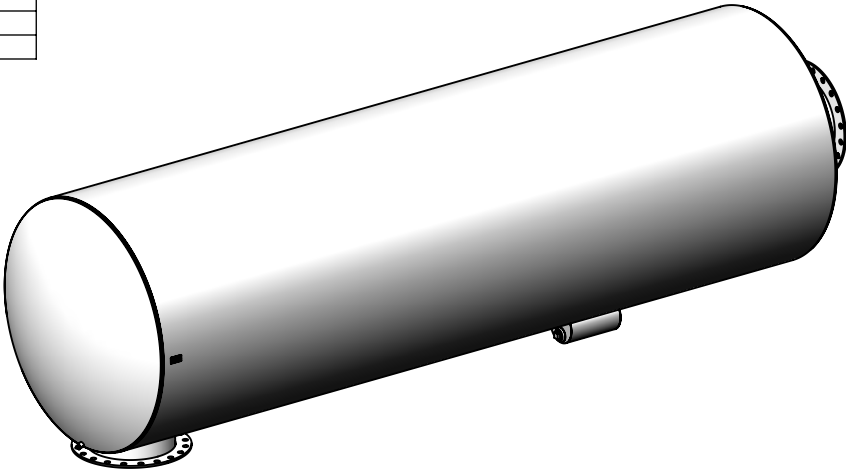


REVISIONS				
REV.	DESCRIPTION	DATE	SHEET(S)	DRAWN BY
0	INITIAL RELEASE	11/04/2016	1	FES
1	CLEAN OUT WAS 1-1/2 NPT	12/12/2017	1	FES



NOTES:

- DO NOT USE EQUIPMENT TO SUPPORT OTHER PARTS OF THE EXHAUST SYSTEM WITHOUT PROPER REINFORCEMENT

MATERIAL CONSTRUCTION:

- 304 STAINLESS STEEL

PAINT:

- NONE

PROJECT NAME
PROPOSAL NUMBER
SALES ORDER NO.
CUSTOMER P.O.

PROPRIETARY AND CONFIDENTIAL



THE INFORMATION CONTAINED IN THIS DRAWING IS THE SOLE PROPERTY OF MIRATECH GROUP, LLC. ANY REPRODUCTION IN PART OR AS A WHOLE WITHOUT THE WRITTEN PERMISSION OF MIRATECH GROUP, LLC IS PROHIBITED.

DIMENSIONS ARE IN INCHES UNLESS OTHERWISE SPECIFIED

DIMENSIONAL TOLERANCES UNLESS OTHERWISE SPECIFIED	
ANGLES:	
MACH: $\pm 1^\circ$	INCHES: ± 0.125
BEND: $\pm 3^\circ$	MILLIMETERS: ± 2

DO NOT SCALE DRAWING

DRAWN	DATE
FES	11/1/2016
REVIEWED BY	DATE
AJM	11/4/2016

		
<div>SUHGE0-22PF-3-0000006F</div> <div>Sales Drawing</div>		
DRAWING		REV 1
SUHGE0-22PF-3-0000006F SD		
SIZE A	SCALE 1:44	WEIGHT: 3219 lb
		SHEET 1 OF 1