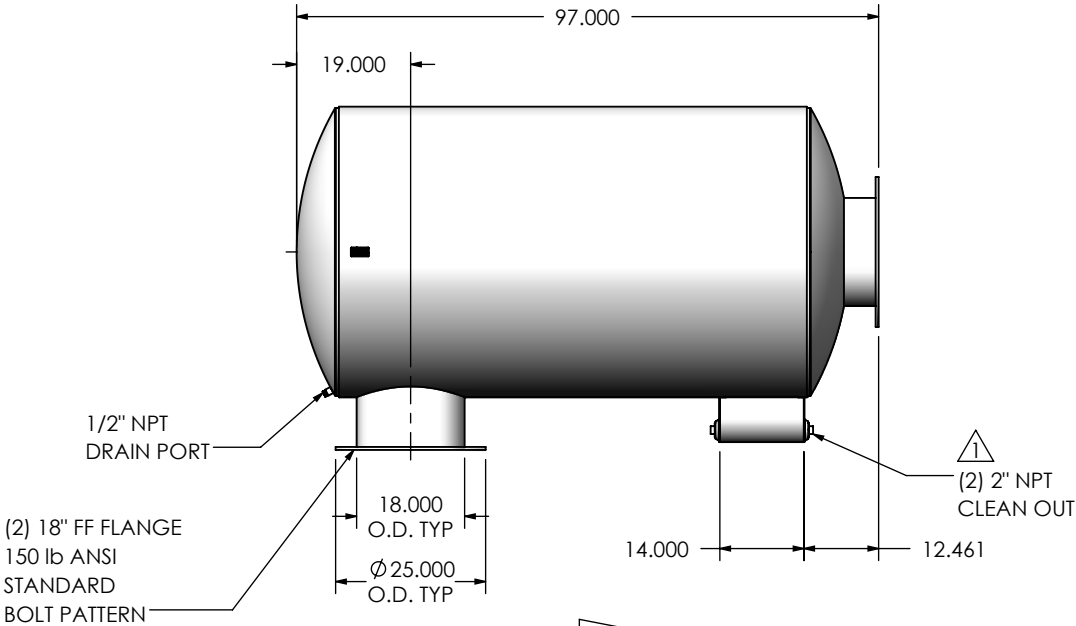
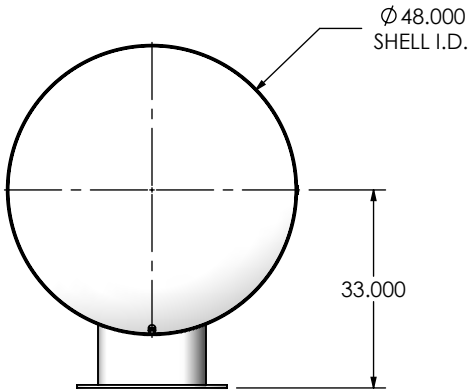
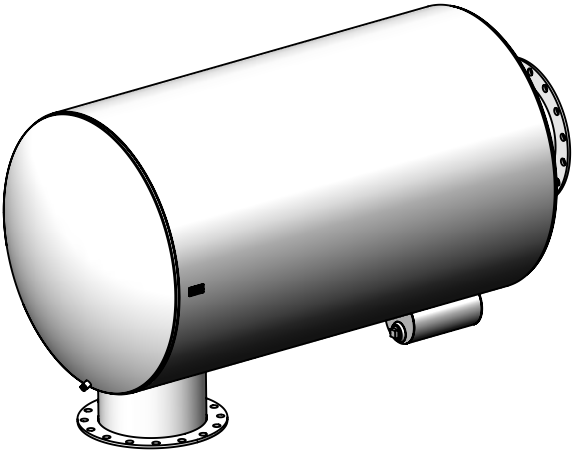


| REVISIONS |   |            |          |          |
|-----------|---|------------|----------|----------|
| REV.      | DESCRIPTION                                       | DATE       | SHEET(S) | DRAWN BY |
| 0         | ORIGINAL RELEASE                                  | 08/15/2016 | 1        | JFS      |
| 1         | (2) 2" NPT CLEAN OUT WAS (2) 1-1/2" NPT CLEAN OUT | 12/12/2017 | 1        | MAM      |



**NOTES:**



- DO NOT USE EQUIPMENT TO SUPPORT OTHER PARTS OF THE EXHAUST SYSTEM WITHOUT PROPER REINFORCEMENT

**MATERIAL CONSTRUCTION:**

- CARBON STEEL

**PAINT:**

- HIGH TEMPERATURE BLACK (MIRATECH COATING SYSTEM 5)

|                 |   |   |                    |   |           |            |                 |
|-----------------|---|---|--------------------|---|-----------|------------|-----------------|
| PROJECT NAME    | <b>PROPRIETARY AND CONFIDENTIAL</b><br><br>THE INFORMATION CONTAINED IN THIS DRAWING IS THE SOLE PROPERTY OF MIRATECH GROUP, LLC. ANY REPRODUCTION IN PART OR AS A WHOLE WITHOUT THE WRITTEN PERMISSION OF MIRATECH GROUP, LLC IS PROHIBITED. | DIMENSIONS ARE IN INCHES UNLESS OTHERWISE SPECIFIED                                   |                    |   |           |            |                 |
| PROPOSAL NUMBER |   | DIMENSIONAL TOLERANCES UNLESS OTHERWISE SPECIFIED<br>ANGLES<br>MACH: ±1°<br>BEND: ±3° |                    | INCHES: ±0.125<br>MILLIMETERS: ±2   |           |            |                 |
| SALES ORDER NO. |   | DO NOT SCALE DRAWING  |                    | <b>SUIGE0-18PF-2-0000005F</b><br><b>Sales Drawing</b>   |           |            |                 |
| CUSTOMER P.O.   |   | DRAWN<br>JFS  | DATE<br>08/15/2016 |   |           |            |                 |
|                 |   | REVIEWED BY<br>EQJ  |                    | DATE<br>08/15/2016  | SIZE<br>A | SCALE 1:32 | WEIGHT: 1159 lb |