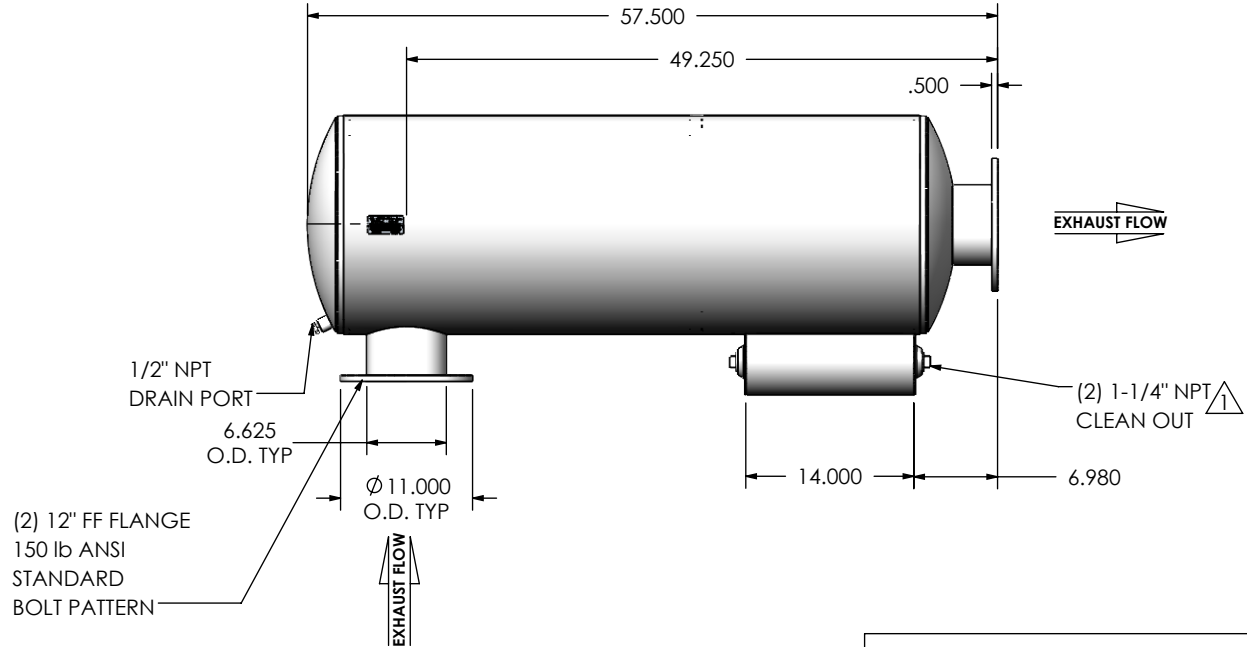
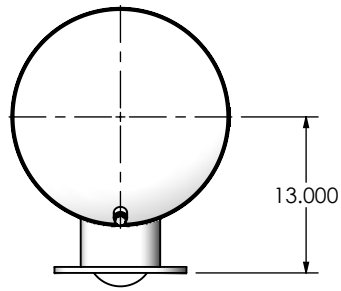
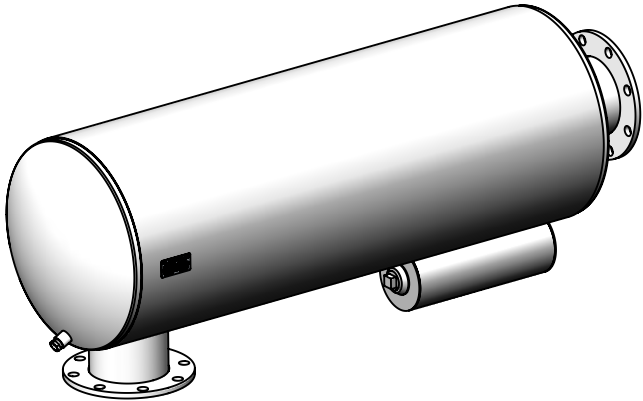


REVISIONS				
REV.	DESCRIPTION	DATE	SHEET(S)	DRAWN BY
0	INITIAL RELEASE	8/26/2016	1	FES
1	CLEAN OUT WAS 1-1/2 NPT	12/19/2017	1	FES



NOTES:



- DO NOT USE EQUIPMENT TO SUPPORT OTHER PARTS OF THE EXHAUST SYSTEM WITHOUT PROPER REINFORCEMENT

MATERIAL CONSTRUCTION:

- ALUMINIZED STEEL

PAINT:

- HIGH TEMPERATURE BLACK (MIRATECH COATING SYSTEM 5)

PROJECT NAME	<p>PROPRIETARY AND CONFIDENTIAL</p> <p>THE INFORMATION CONTAINED IN THIS DRAWING IS THE SOLE PROPERTY OF MIRATECH GROUP, LLC. ANY REPRODUCTION IN PART OR AS A WHOLE WITHOUT THE WRITTEN PERMISSION OF MIRATECH GROUP, LLC IS PROHIBITED.</p>	<p>DIMENSIONS ARE IN INCHES UNLESS OTHERWISE SPECIFIED</p> <p>ANGLES: DIMENSIONAL TOLERANCES UNLESS OTHERWISE SPECIFIED</p> <p>MACH: ±1" INCHES: ±0.125</p> <p>BEND: ±3" MILLIMETERS: ±2</p>		 			
PROPOSAL NUMBER		DO NOT SCALE DRAWING		<p>SURGE0-06PF-1-000002D</p> <p>Sales Drawing</p>			
SALES ORDER NO.		DRAWN	DATE	DRAWING		REV	
CUSTOMER P.O.		JFS	08/26/2016	SURGE0-06PF-1-000002D SD		1	
		REVIEWED BY	DATE	SIZE	SCALE 1:16	WEIGHT: 129 lb	SHEET 1 OF 1
			08/15/2016	A			