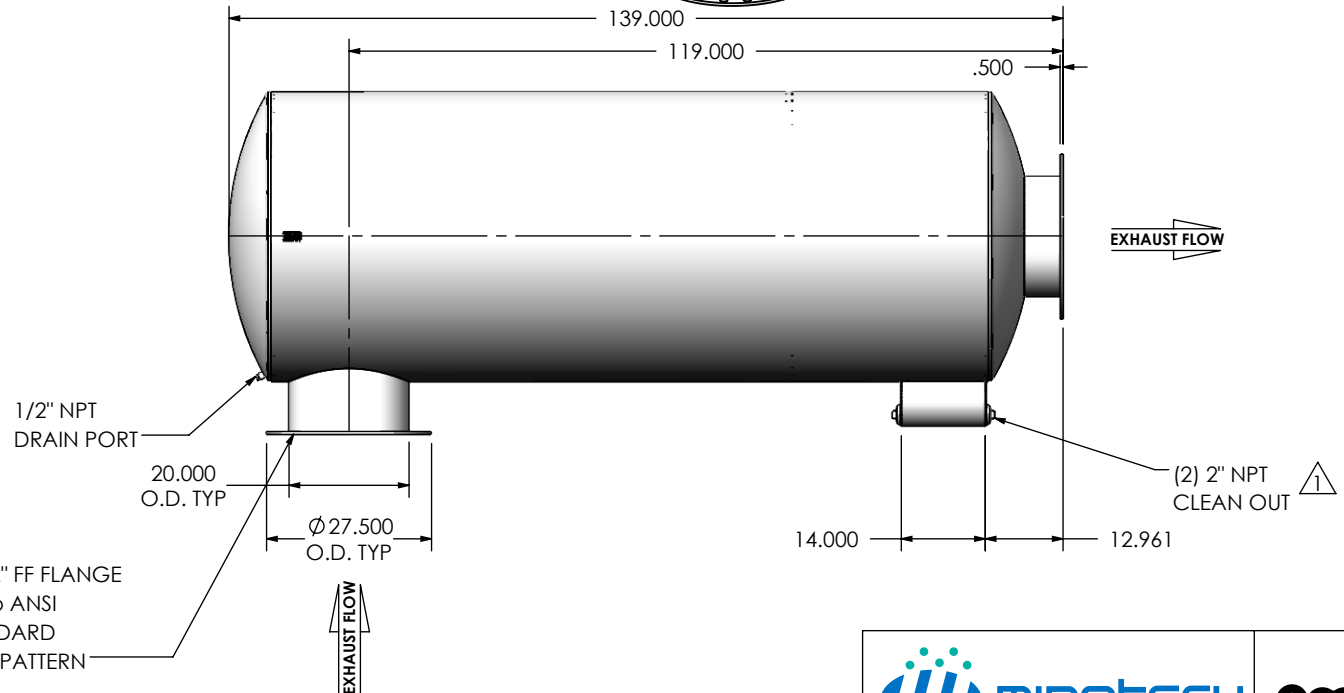
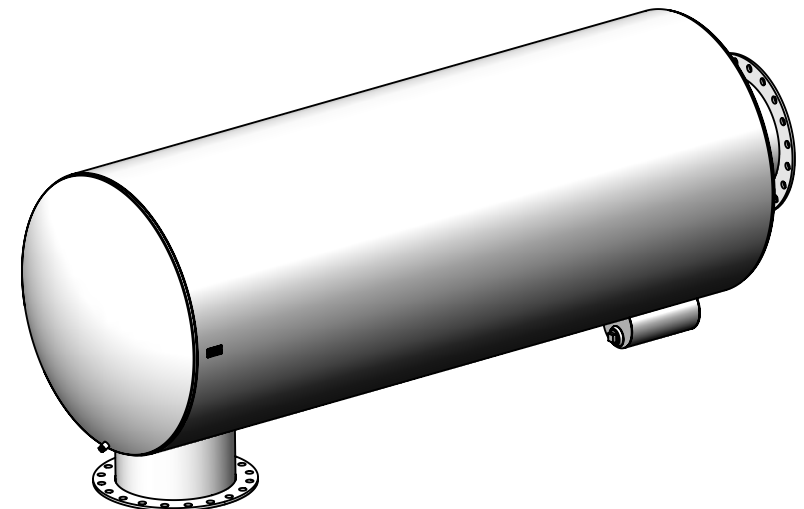
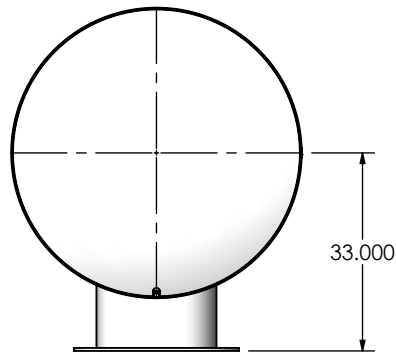


REVISIONS				
REV.	DESCRIPTION	DATE	SHEET(S)	DRAWN BY
0	INITIAL RELEASE	8/26/2016	1	FES
1	CLEAN OUT WAS 1-1/2 NPT	12/20/2017	1	FES



#### NOTES:

- DO NOT USE EQUIPMENT TO SUPPORT OTHER PARTS OF THE EXHAUST SYSTEM WITHOUT PROPER REINFORCEMENT

#### MATERIAL CONSTRUCTION:

- CARBON STEEL

#### PAINT:

- HIGH TEMPERATURE BLACK (MIRATECH COATING SYSTEM 5)

PROJECT NAME
PROPOSAL NUMBER
SALES ORDER NO.
CUSTOMER P.O.

#### PROPRIETARY AND CONFIDENTIAL

THE INFORMATION CONTAINED IN THIS DRAWING IS THE SOLE PROPERTY OF MIRATECH GROUP, LLC. ANY REPRODUCTION IN PART OR AS A WHOLE WITHOUT THE WRITTEN PERMISSION OF MIRATECH GROUP, LLC IS PROHIBITED.

DIMENSIONS ARE IN INCHES UNLESS OTHERWISE SPECIFIED

ANGLES	
MACH: $\pm 1^\circ$	INCHES: $\pm 0.125$
BEND: $\pm 3^\circ$	MILLIMETERS: $\pm 2$

DO NOT SCALE DRAWING

DRAWN	DATE
JFS	08/26/2016
REVIEWED BY	DATE
	08/15/2016



**MIRATECH**

**em**  
PRODUCTS<sup>®</sup>

**SURGE0-20PF-2-0000005F**  
**Sales Drawing**

DRAWING	SURGE0-20PF-2-0000005Q SD	REV 1
SIZE A	SCALE 1:32	WEIGHT: 1540 lb
SHEET 1 OF 1		