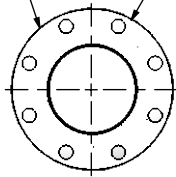


(2) 5" FF FLANGE  
150 lb ANSI  
STANDARD  
BOLT PATTERN



FRONT VIEW

Ø 10.000  
SHELL I.D.

1/2" NPT  
DRAIN PORT



RIGHT VIEW



**NOTES:**

- DO NOT USE EQUIPMENT TO SUPPORT OTHER PARTS OF THE EXHAUST SYSTEM WITHOUT PROPER REINFORCEMENT

**MATERIAL CONSTRUCTION:**

- 304 STAINLESS STEEL



**PAINT:**

- NONE

PROJECT NAME	<p><b>PROPRIETARY AND CONFIDENTIAL</b></p> <p>THE INFORMATION CONTAINED IN THIS DRAWING IS THE SOLE PROPERTY OF MIRATECH GROUP, LLC. ANY REPRODUCTION IN PART OR AS A WHOLE WITHOUT THE WRITTEN PERMISSION OF MIRATECH GROUP, LLC IS PROHIBITED.</p>
PROPOSAL NUMBER	
SALES ORDER NO.	
CUSTOMER P.O.	

<p>DIMENSIONS ARE IN INCHES UNLESS OTHERWISE SPECIFIED</p> <p>ANGLES: ±1° INCHES: ±0.125 BEND: ±3° MILLIMETERS: ±2</p> <p>DO NOT SCALE DRAWING</p>	
DRAWN	DATE
FES	10/07/2016
REVIEWED BY	DATE
AJM	10/14/2016

<p>DRAWING</p> <p>TCEEP-05PF-3-00000000 SD</p>	
SIZE	SCALE 1:12
A	WEIGHT: 57.1175 lb

 <b>MIRATECH</b>	
<p><b>TCEEP-05PF-3-00000000</b> Sales Drawing</p>	
<p>DRAWING</p> <p>TCEEP-05PF-3-00000000 SD</p>	
REV	SHEET 1 OF 1
0	