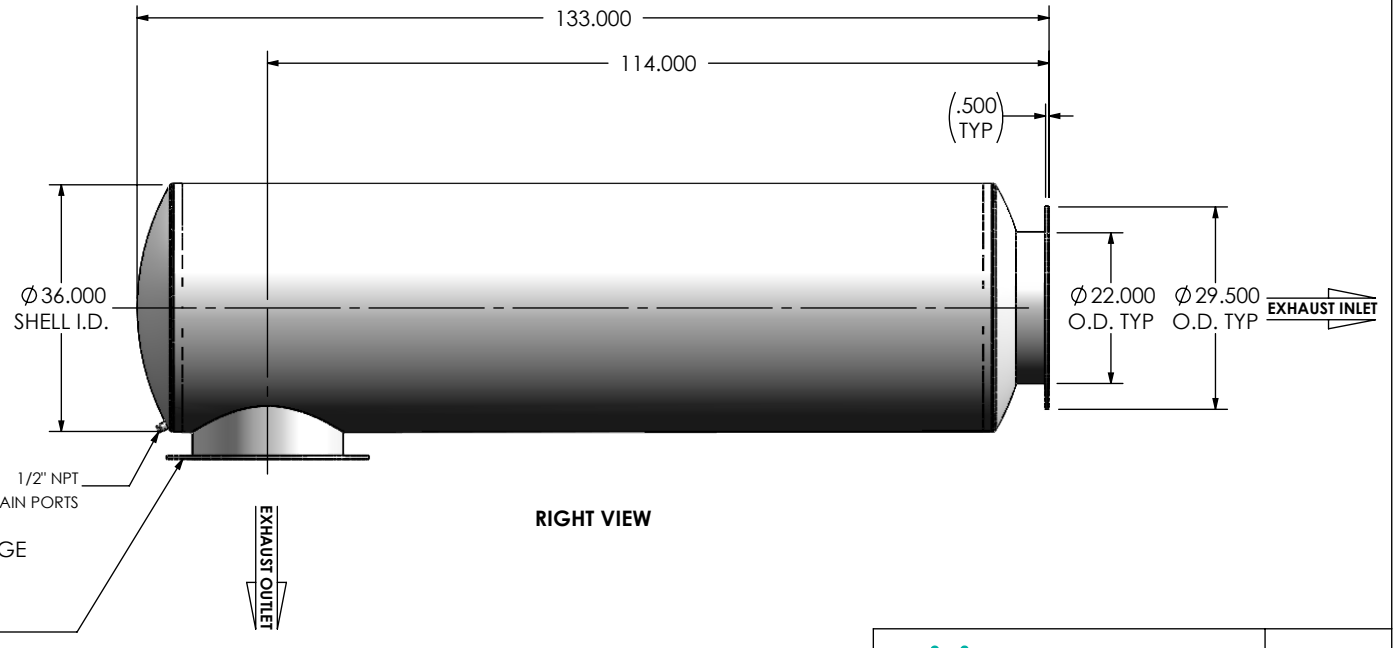


FRONT VIEW



RIGHT VIEW

(2) 22" FF FLANGE
150 lb ANSI
STANDARD
BOLT PATTERN

EXHAUST OUTLET

NOTES:

- DO NOT USE EQUIPMENT TO SUPPORT OTHER PARTS OF THE EXHAUST SYSTEM WITHOUT PROPER REINFORCEMENT

MATERIAL CONSTRUCTION:

- 304 STAINLESS STEEL

PAINT:

- HIGH TEMPERATURE BLACK (MIRATECH COATING SYSTEM 4)

PROJECT NAME
PROPOSAL NUMBER
SALES ORDER NO.
CUSTOMER P.O.

PROPRIETARY AND CONFIDENTIAL

THE INFORMATION CONTAINED IN THIS DRAWING IS THE SOLE PROPERTY OF MIRATECH GROUP, LLC. ANY REPRODUCTION IN PART OR AS A WHOLE WITHOUT THE WRITTEN PERMISSION OF MIRATECH GROUP, LLC IS PROHIBITED.

DIMENSIONS ARE IN INCHES
UNLESS OTHERWISE SPECIFIED

ANGLES	
MACH: $\pm 1^\circ$	INCHES: ± 0.125
BEND: $\pm 3^\circ$	MILLIMETERS: ± 2

DO NOT SCALE DRAWING

DRAWN	DATE
JFS	08/04/2016
REVIEWED BY	DATE
	08/04/2016



TRGEP-22PF-3-0000005F
Sales Drawing

DRAWING	TRGEP-22PF-3-0000005F SD	REV 0
SIZE A	SCALE 1:28	WEIGHT: 679 lb
		SHEET 1 OF 1