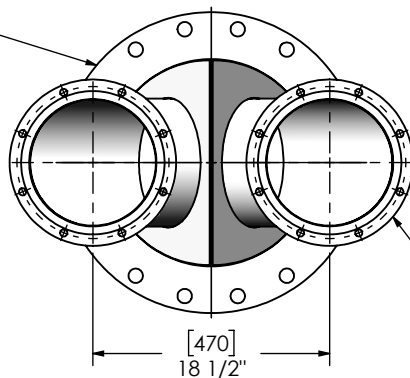
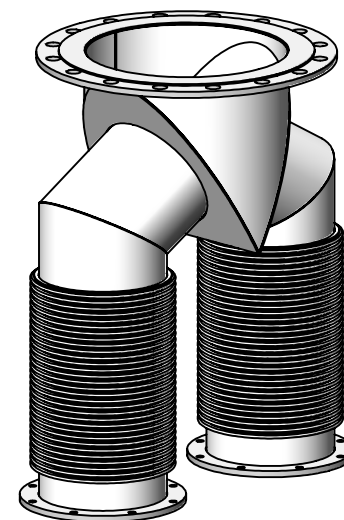


16" FF FLANGE
150 lb ANSI
STANDARD
BOLT PATTERN
FLANGE FLOATS



(2) 10" DETROIT DIESEL FF FLANGE
FLANGE FLOATS



NOTES:

- DO NOT USE EQUIPMENT TO SUPPORT OTHER PARTS OF THE EXHAUST SYSTEM WITHOUT PROPER REINFORCEMENT

MATERIAL CONSTRUCTION:

- CARBON STEEL

PAINT:

- HIGH TEMPERATURE BLACK (MIRATECH COATING SYSTEM 5)

PROJECT NAME
PROPOSAL NUMBER
SALES ORDER NO.
CUSTOMER P.O.



PROPRIETARY AND CONFIDENTIAL

THE INFORMATION CONTAINED IN THIS DRAWING IS THE SOLE PROPERTY OF MIRATECH GROUP, LLC. ANY REPRODUCTION IN PART OR AS A WHOLE WITHOUT THE WRITTEN PERMISSION OF MIRATECH GROUP, LLC IS PROHIBITED.

DIMENSIONS ARE APPROXIMATE IN INCHES UNLESS OTHERWISE SPECIFIED

DIMENSIONAL TOLERANCES UNLESS OTHERWISE SPECIFIED	
ANGLES	
MACH: $\pm 2^\circ$	INCHES: $\pm 1/8$
BEND: $\pm 3^\circ$	MILLIMETERS: ± 3

DO NOT SCALE DRAWING	
DRAWN	DATE
JCO	07/30/2019
REVIEWED BY	DATE
CAC	07/30/2019

			
<div>Y10-D10DF2-16PF2-185-348-00-2</div> <div>Sales Drawing</div>			
DRAWING		REV	
Y10-D10DF2-16PF2-185-348-00-2 SD		C	
SIZE A	SCALE 1:15	WEIGHT: 115 lb	SHEET 1 OF 1