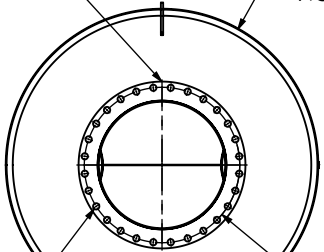


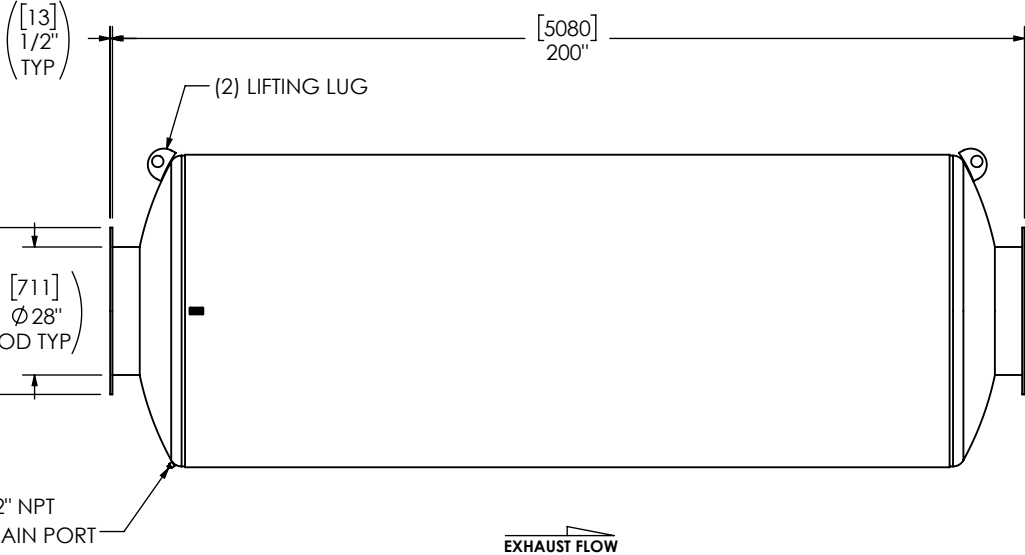
(2) 28" FF FLANGE  
150 lb ANSI  
STANDARD  
BOLT PATTERN

[1727]  
Ø 68"  
NOM DIA



[35]  
Ø 1 3/8"  
TYP

[864]  
Ø 34"  
BCD

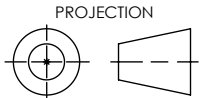


- NOTES:**
- DO NOT USE EQUIPMENT TO SUPPORT OTHER PARTS OF THE EXHAUST SYSTEM WITHOUT PROPER REINFORCEMENT
- MATERIAL CONSTRUCTION:**
- CARBON STEEL
- PAINT:**
- HIGH TEMPERATURE BLACK (MIRATECH COATING SYSTEM 5)

PROJECT NAME	
PROPOSAL NUMBER	
SALES ORDER NO.	
CUSTOMER P.O. [P.N.]	

**PROPRIETARY AND CONFIDENTIAL**

THE INFORMATION CONTAINED IN THIS DRAWING IS THE SOLE PROPERTY OF MIRATECH. ANY REPRODUCTION IN PART OR AS A WHOLE WITHOUT THE WRITTEN PERMISSION OF MIRATECH IS PROHIBITED.



ALL DIMENSIONS IN INCHES (MILLIMETERS) UNLESS OTHERWISE SPECIFIED.	
CRITICAL DIMENSIONS ARE CIRCLED	
TOLERANCES UNLESS OTHERWISE SPECIFIED	
< 12 [305]	±1/8 [3]
12 [305] ≥ 36 [915]	±3/16 [5]
36 [915] ≥ 360 [9150]	±5/16 [9]
> 360 [9150]	±7/16 [12]
ANGULAR	±3°
WEIGHT	±10%
DRAWN SK	DATE 2023-12-04
REVIEWED CSF	DATE 2023-12-04

**M3EE0-28PF-2-00000000**

SILENCER CRITICAL GRADE M32

SALES DRAWING  
M3EE0-28PF-2-00000000 SD

SCALE	WEIGHT	OEM NO	REV
DO NOT SCALE	3240lb/1472kg		0
SIZE	SHEET NO.	1 OF 1	
A			