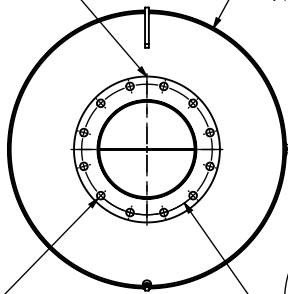


(2) 12" FF FLANGE
150 lb ANSI
STANDARD
BOLT PATTERN

[914]
Ø 36"
NOM DIA

[25]
Ø 1"
TYP



[432]
Ø 17"
BCD

[13]
1/2"
TYP

[3302]
130"

(2) LIFTING LUG

[483]
Ø 19"
OD TYP

[324]
Ø 12 3/4"
OD TYP

1/2" NPT
DRAIN PORT

EXHAUST FLOW

NOTES:

- DO NOT USE EQUIPMENT TO SUPPORT OTHER PARTS OF THE EXHAUST SYSTEM WITHOUT PROPER REINFORCEMENT

MATERIAL CONSTRUCTION:

- CARBON STEEL

PAINT:

- HIGH TEMPERATURE BLACK (MIRATECH COATING SYSTEM 5)

PROJECT NAME	PROPRIETARY AND CONFIDENTIAL THE INFORMATION CONTAINED IN THIS DRAWING IS THE SOLE PROPERTY OF MIRATECH. ANY REPRODUCTION IN PART OR AS A WHOLE WITHOUT THE WRITTEN PERMISSION OF MIRATECH IS PROHIBITED.	ALL DIMENSIONS IN INCHES (MILLIMETERS) UNLESS OTHERWISE SPECIFIED. CRITICAL DIMENSIONS ARE CIRCLED				
PROPOSAL NUMBER		TOLERANCES UNLESS OTHERWISE SPECIFIED < 12 [305] ±1/8 [3] 12 [305] ≥ 36 [915] ±3/16 [5] 36 [915] ≥ 360 [9150] ±5/16 [9] > 360 [9150] ±7/16 [12]		M5EE0-12PF-2-00000000 SILENCER HOSPITAL GRADE M52		
SALES ORDER NO.		DRAWN SK DATE 2023-12-05 REVIEWED CSF DATE 2023-12-05		SALES DRAWING M5EE0-12PF-2-00000000 SD		
CUSTOMER P.O. [P.N.]		PROJECTION 		SIZE A	SCALE 1:25	WEIGHT 839lb/381kg